

Figure: 02-01

Copyright © 2008 Pearson Prentice Hall, Inc.

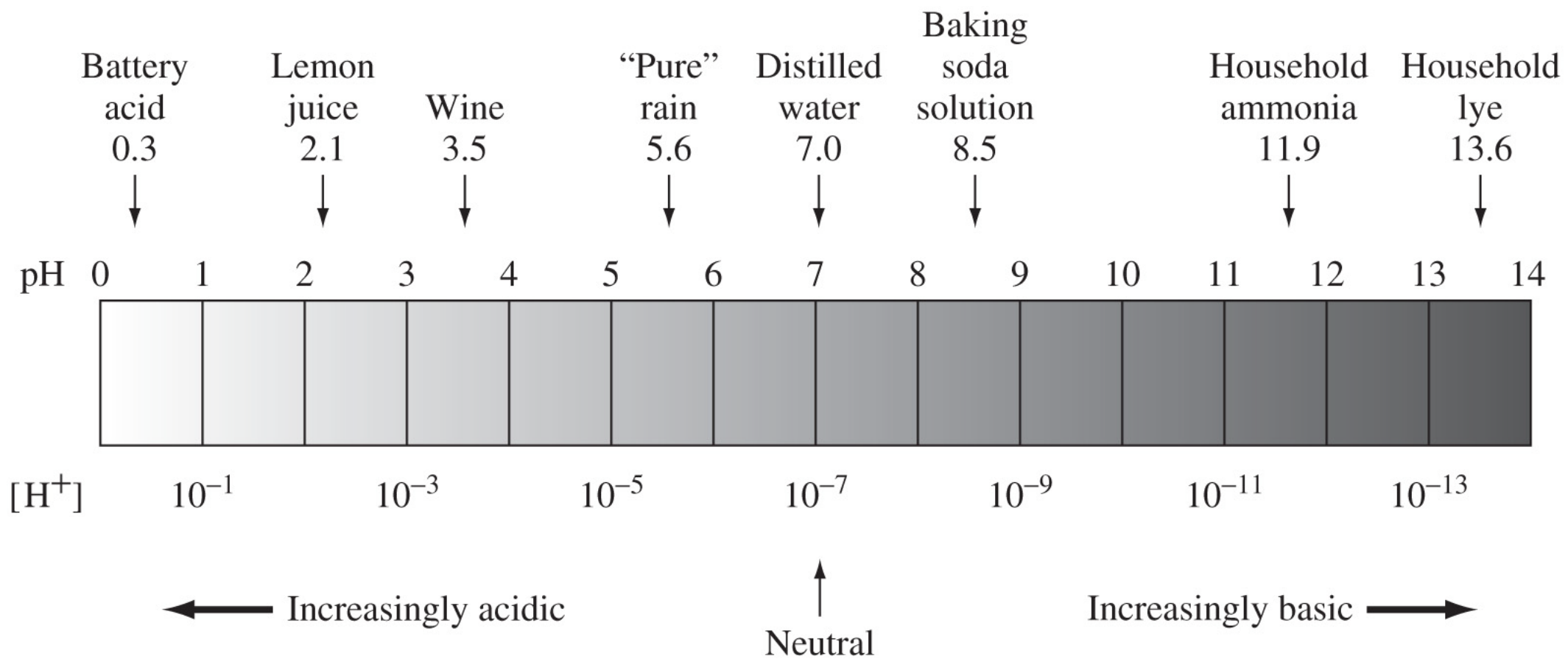


Figure: 02-02

Copyright © 2008 Pearson Prentice Hall, Inc.

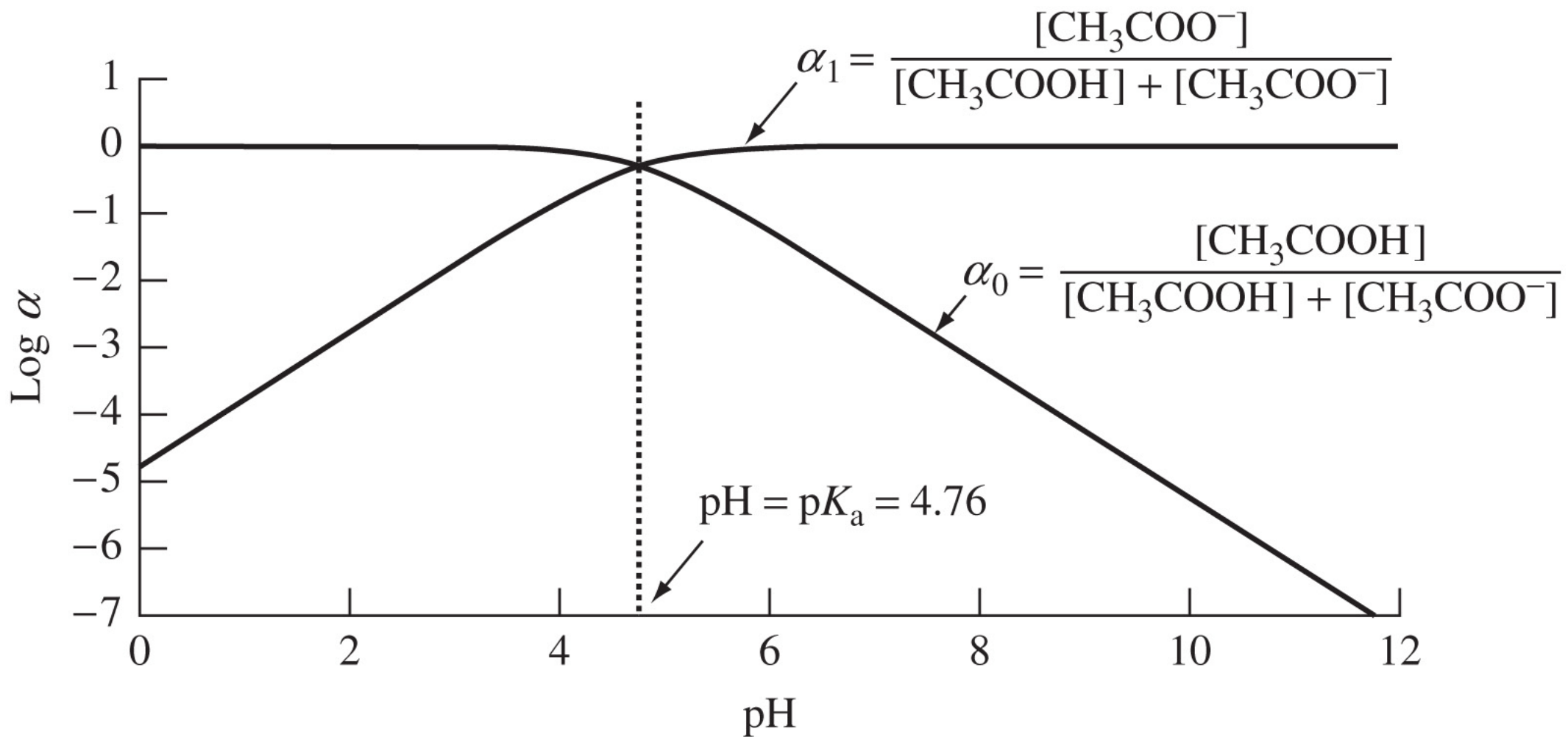


Figure: 02-03

Copyright © 2008 Pearson Prentice Hall, Inc.

pH	$\frac{[\text{NH}_3]}{[\text{NH}_3] + [\text{NH}_4^+]}$
4	0.000005
6	0.0005
8	0.052
9	0.35
10	0.85
12	0.99

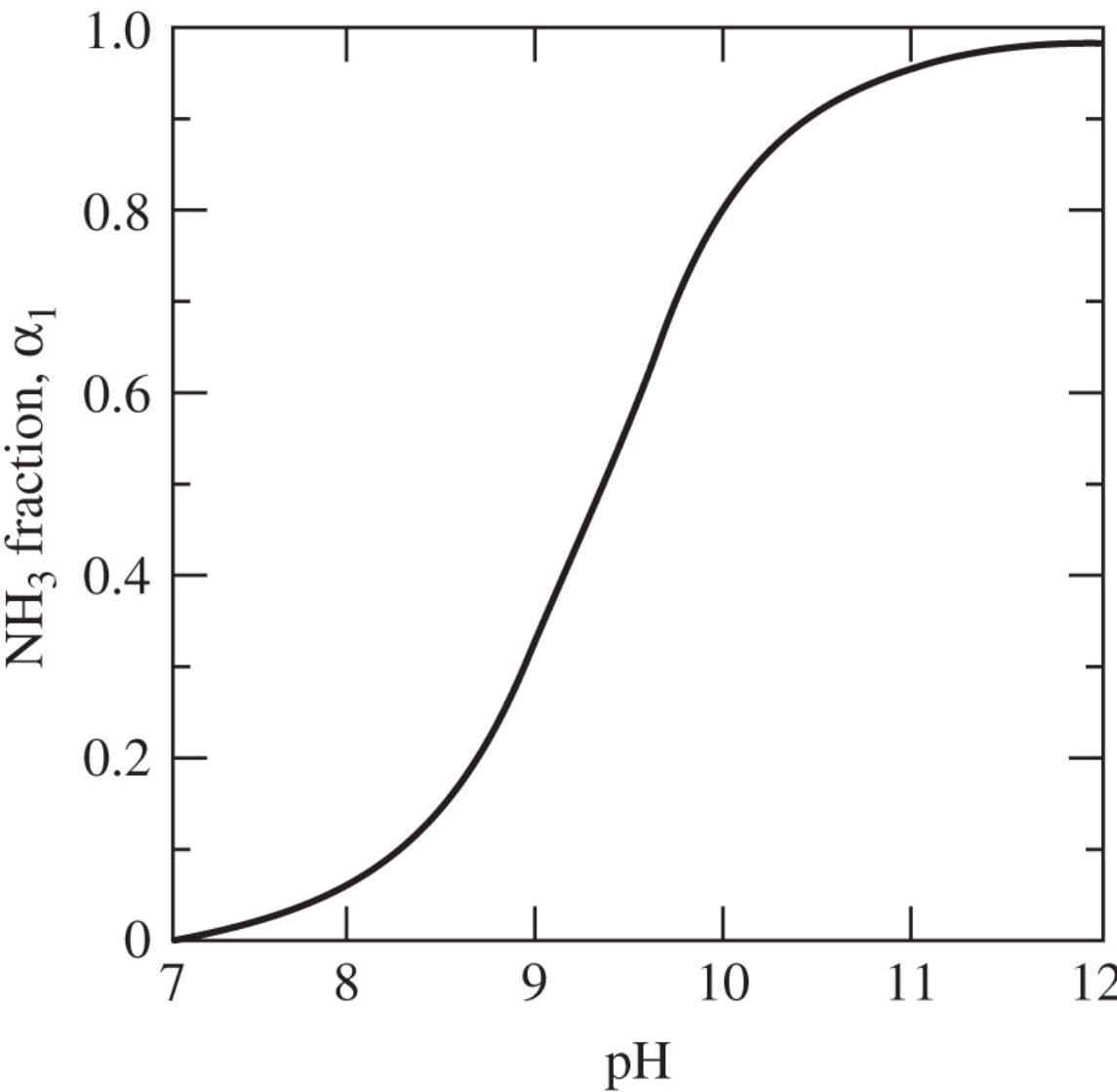


Figure: 02-04

Copyright © 2008 Pearson Prentice Hall, Inc.

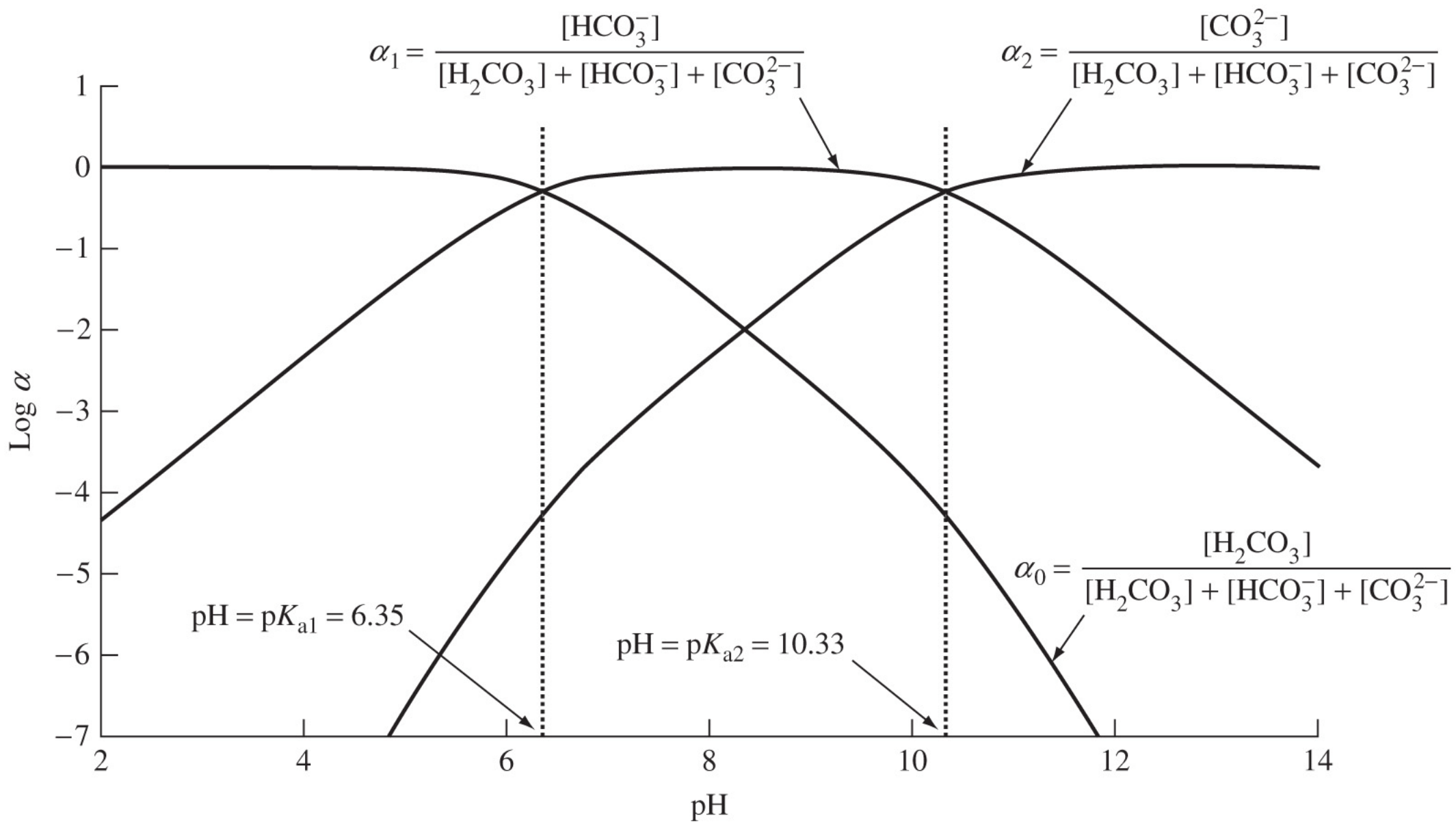
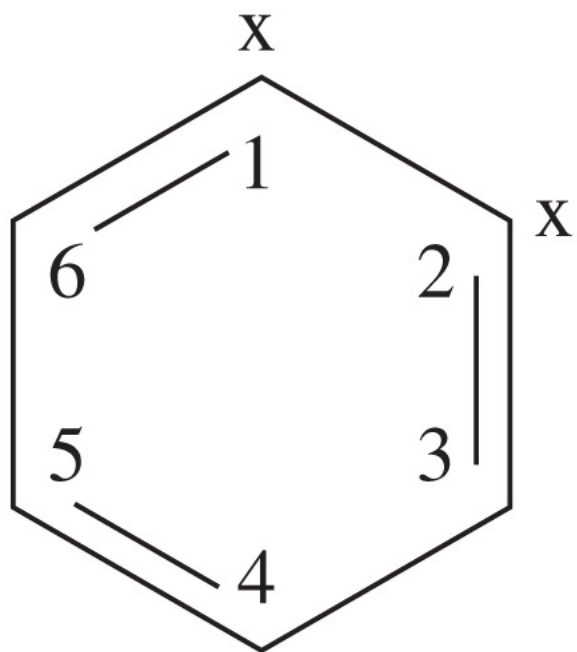
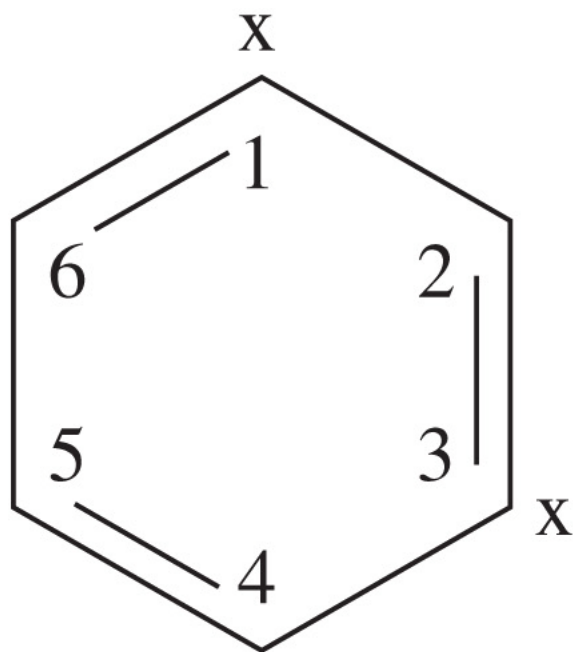


Figure: 02-05

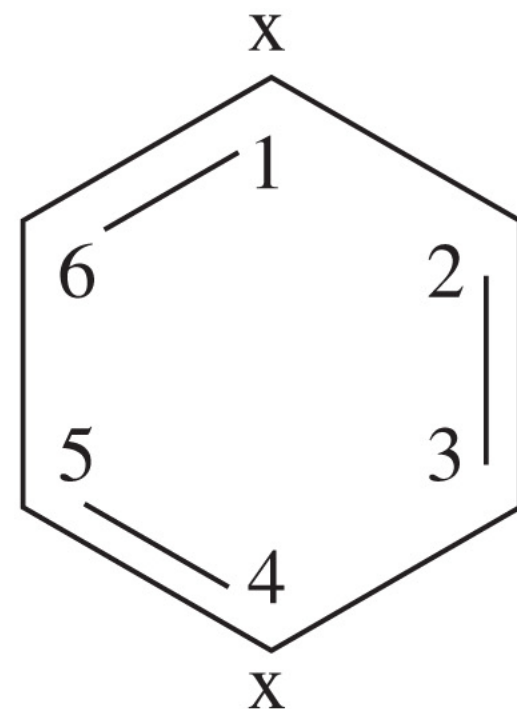
Copyright © 2008 Pearson Prentice Hall, Inc.



1, 2 - or *ortho*



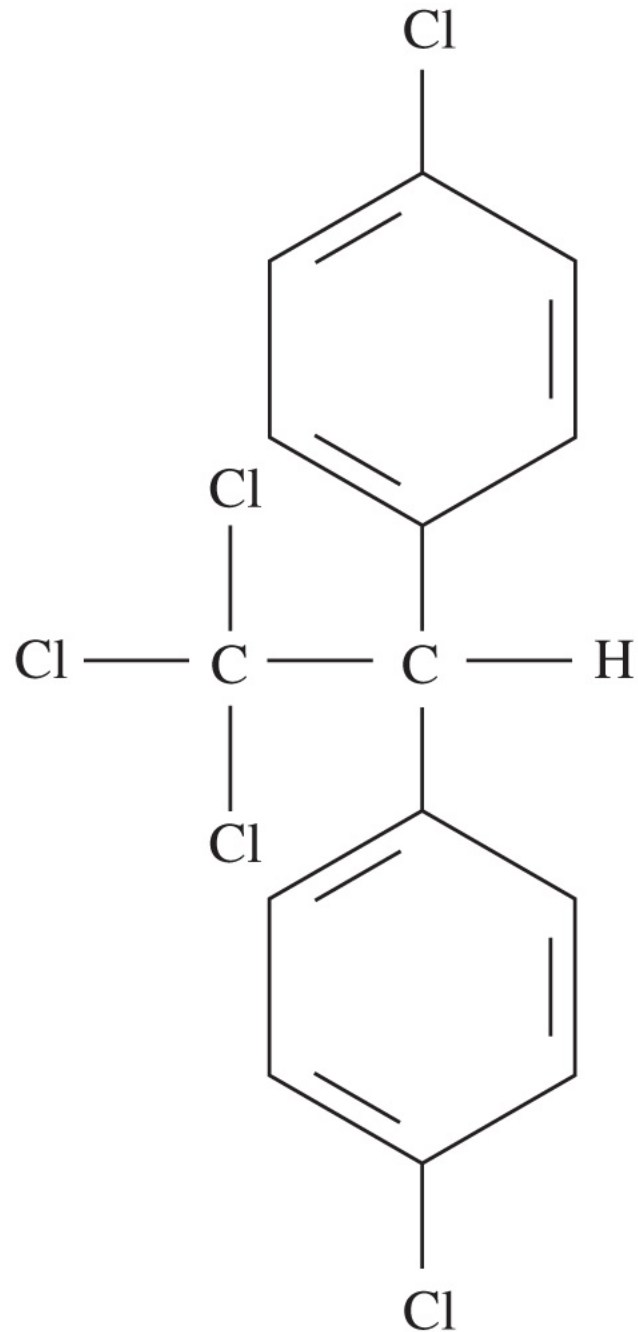
1, 3 - or *meta*



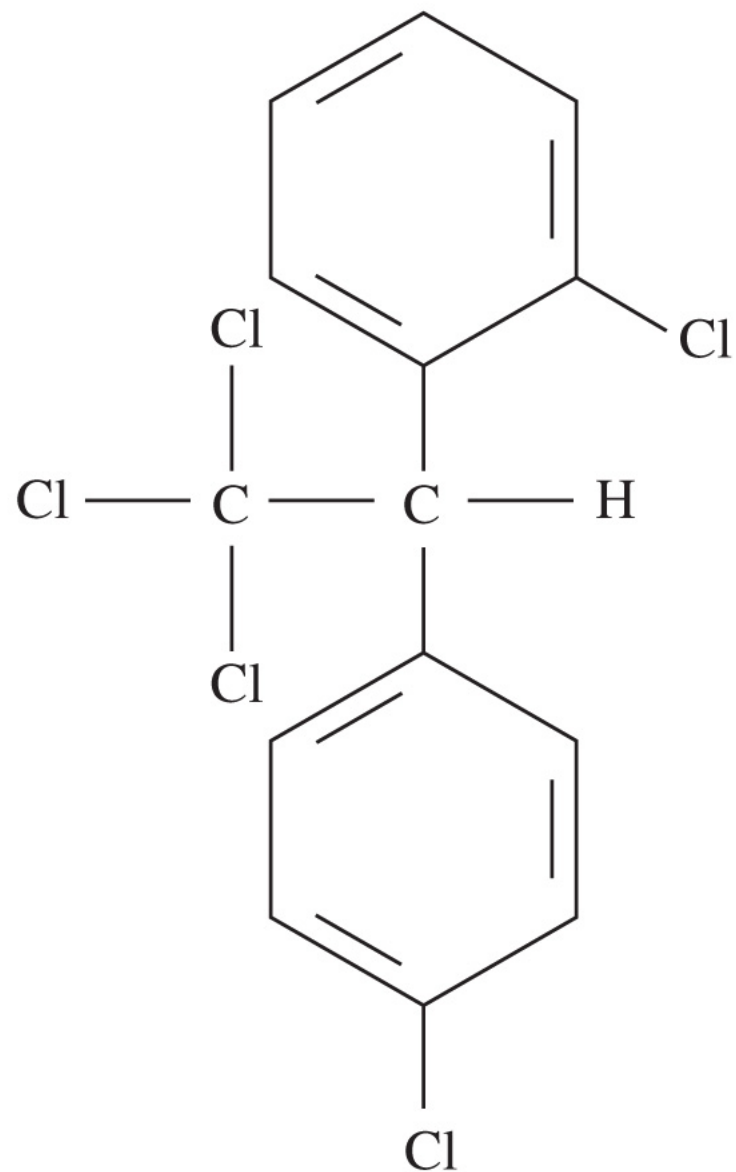
1, 4 - or *para*

Figure: 02-06

Copyright © 2008 Pearson Prentice Hall, Inc.



p, p' - DDT



o, p' - DDT

Figure: 02-07

Copyright © 2008 Pearson Prentice Hall, Inc.

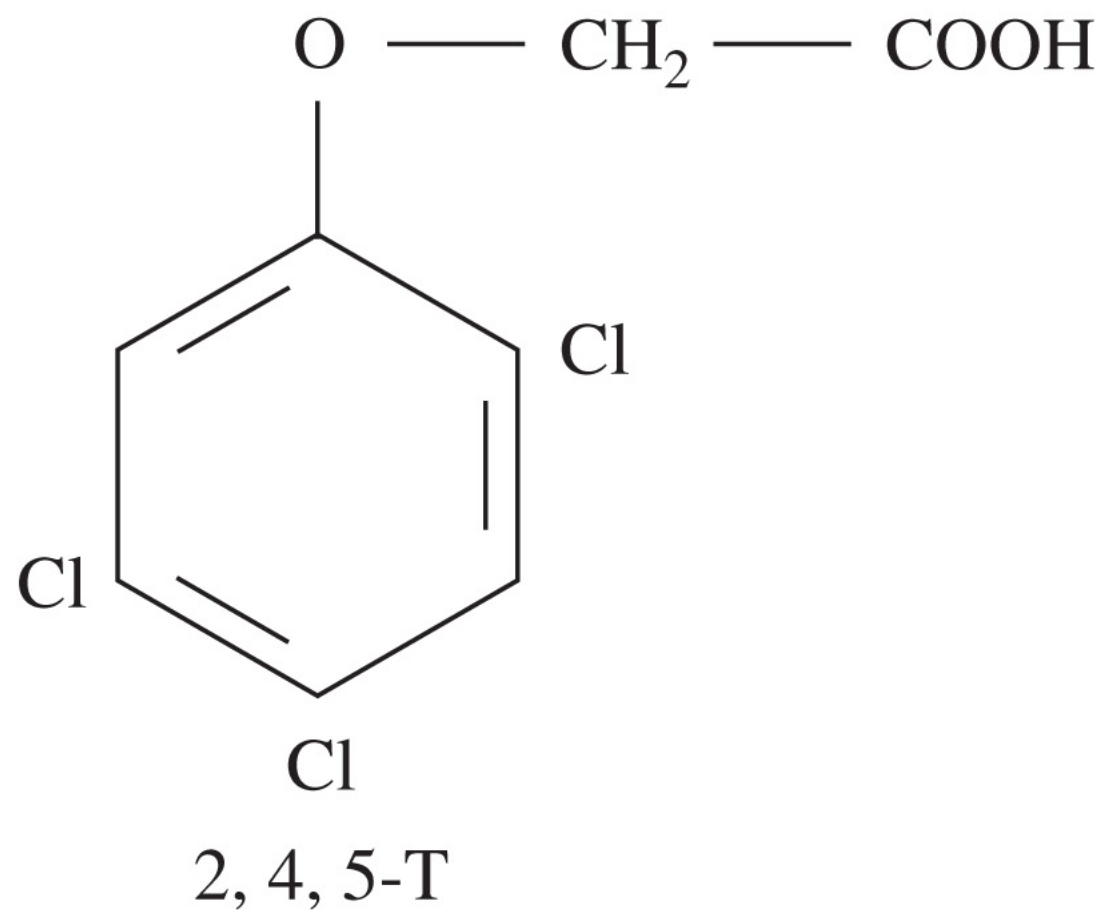
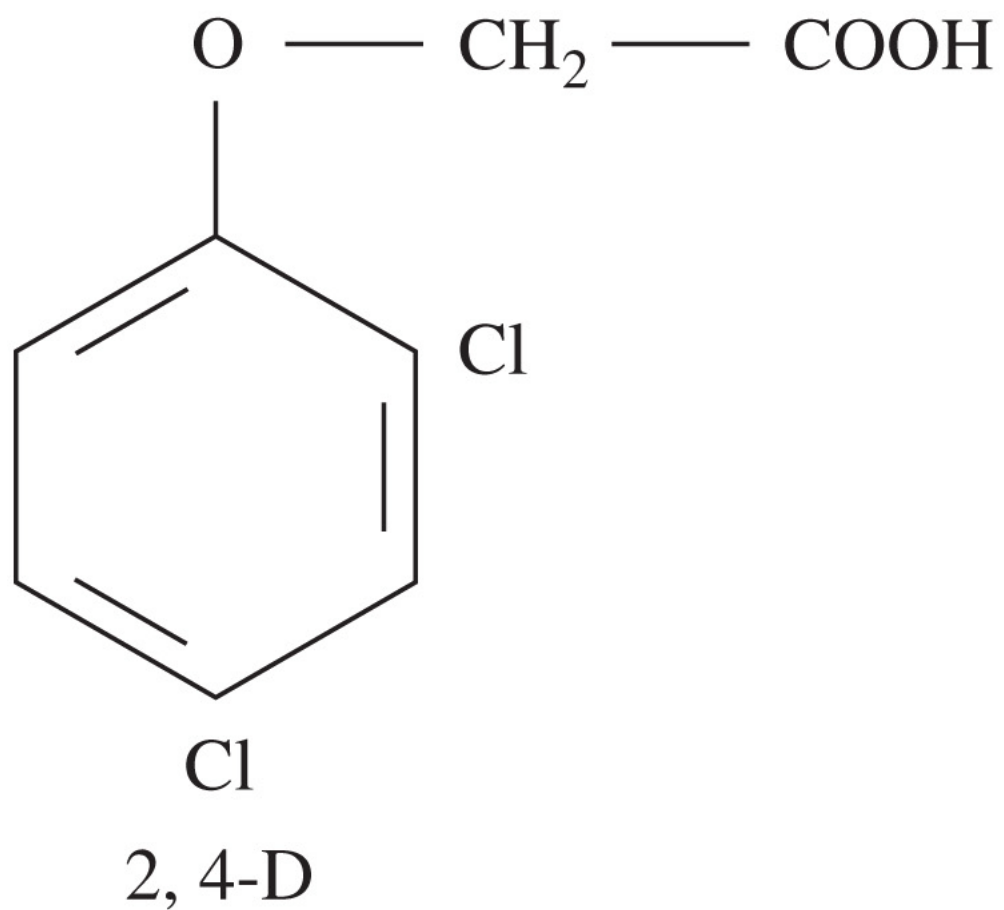


Figure: 02-08

Copyright © 2008 Pearson Prentice Hall, Inc.

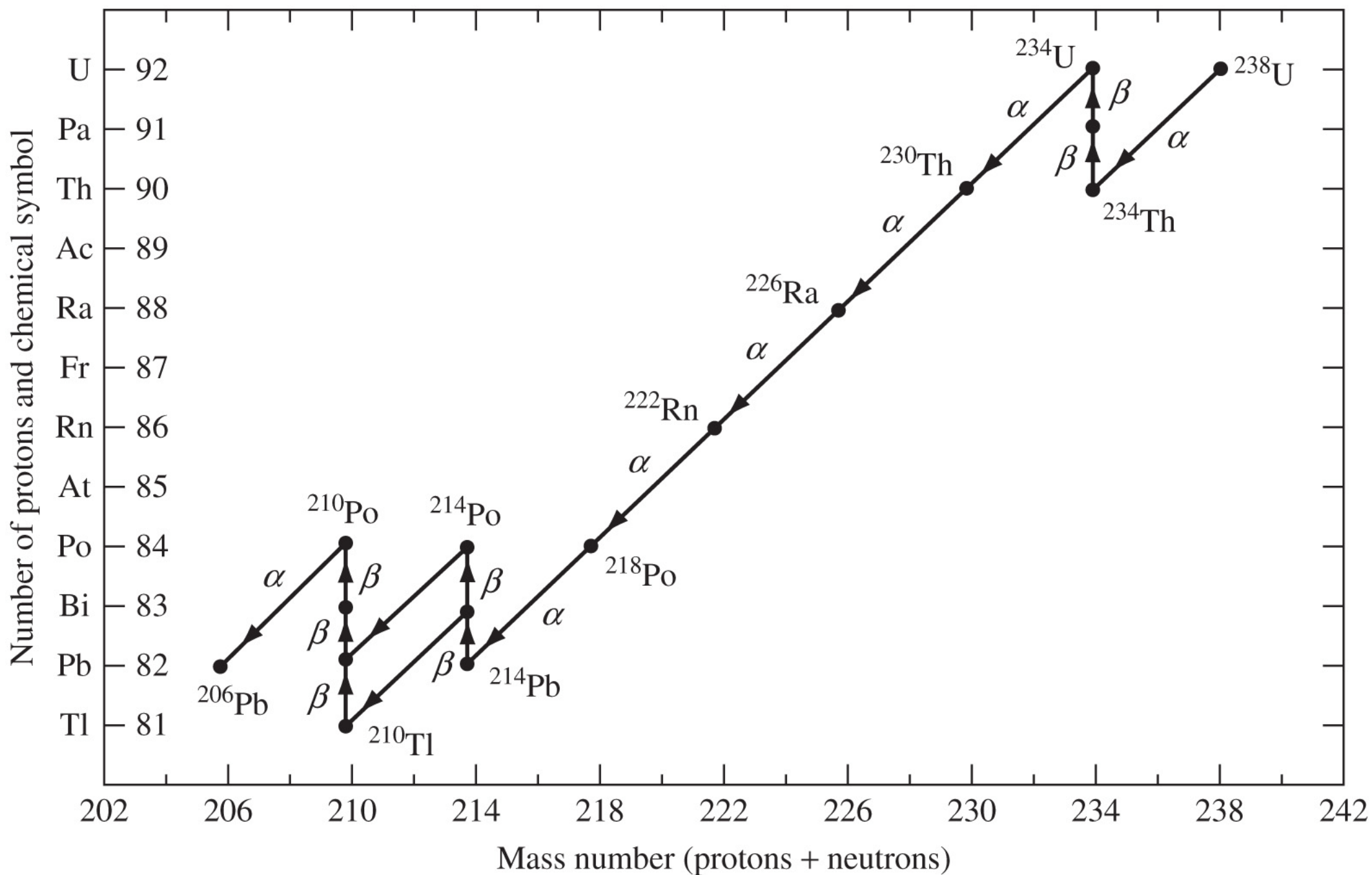


Figure: 02-09

Copyright © 2008 Pearson Prentice Hall, Inc.

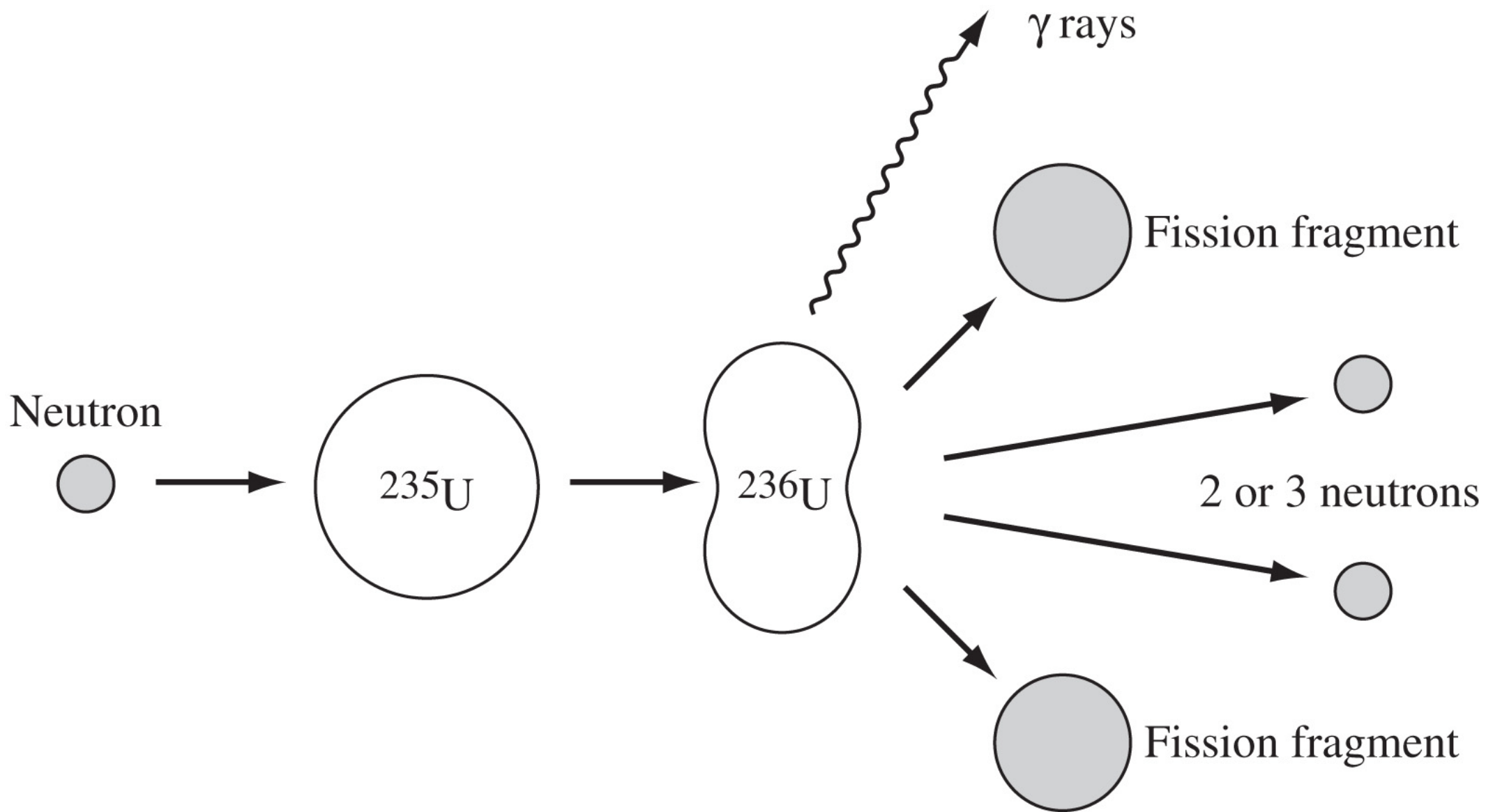


Figure: 02-10

Copyright © 2008 Pearson Prentice Hall, Inc.

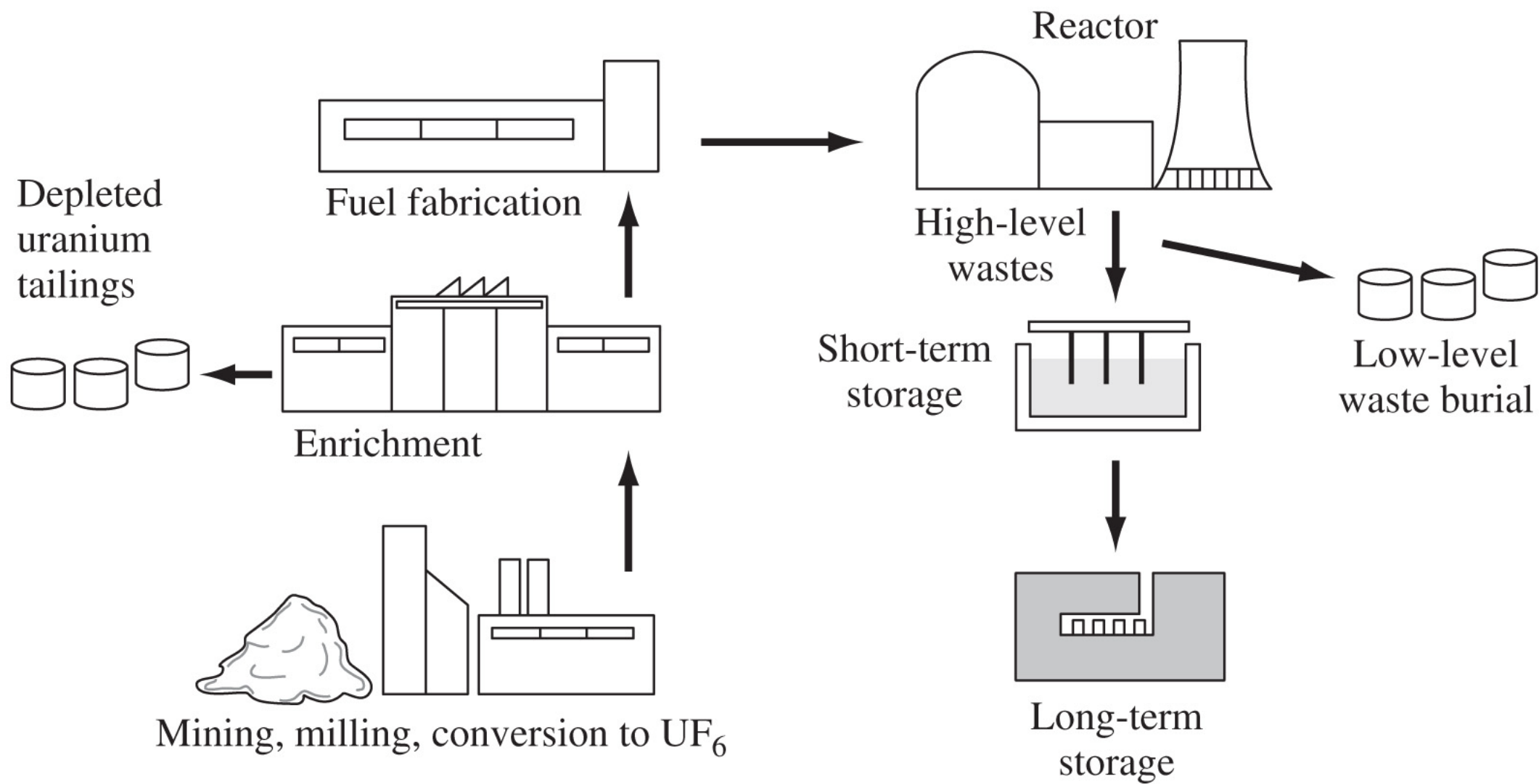


Figure: 02-11

Copyright © 2008 Pearson Prentice Hall, Inc.

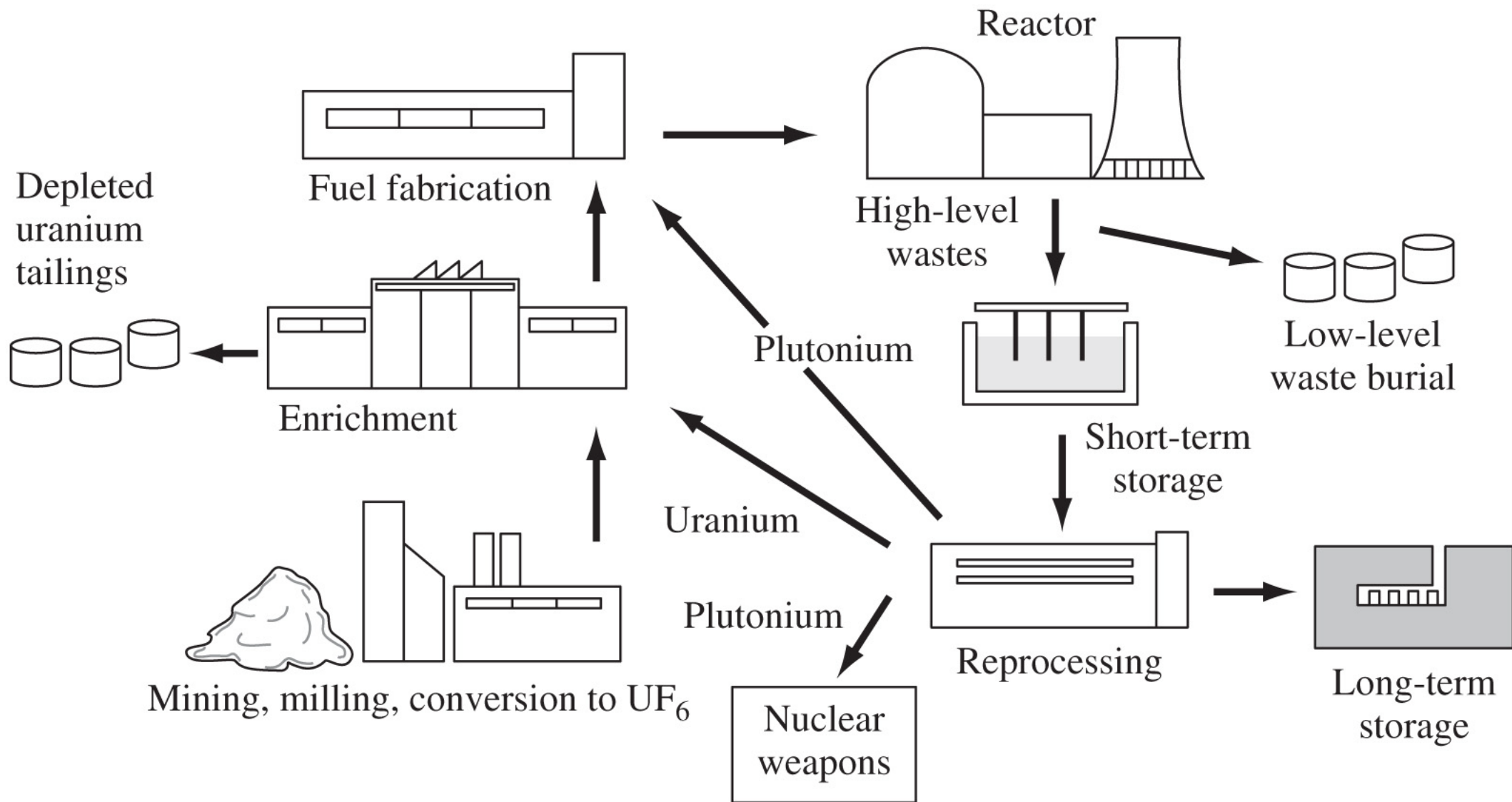
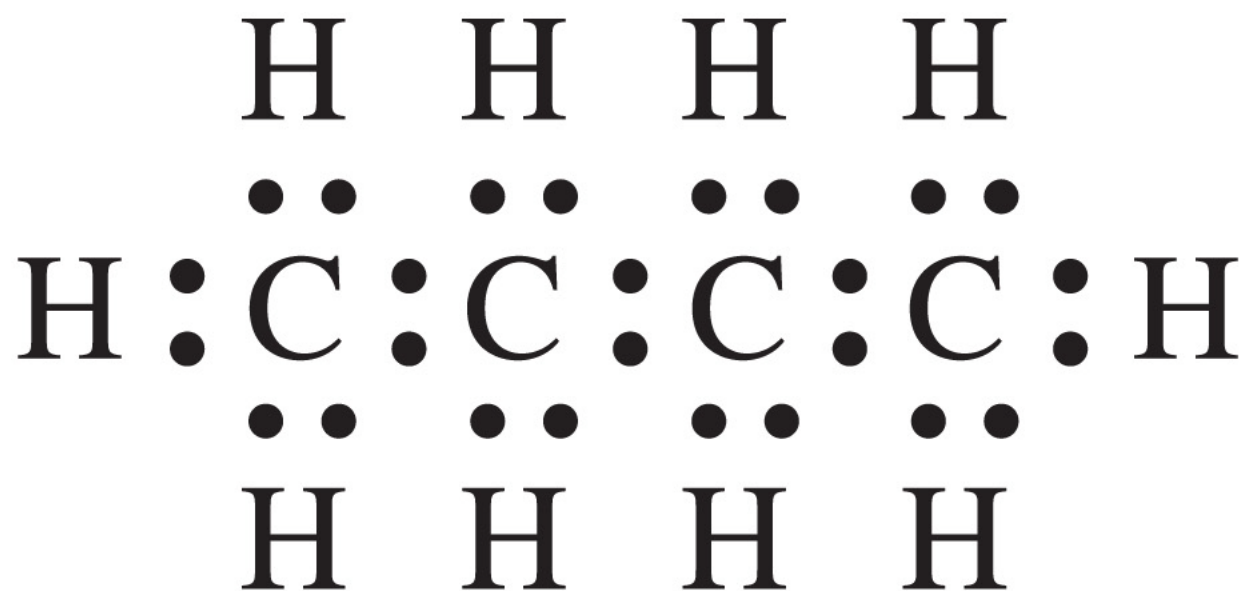


Figure: 02-12

Copyright © 2008 Pearson Prentice Hall, Inc.

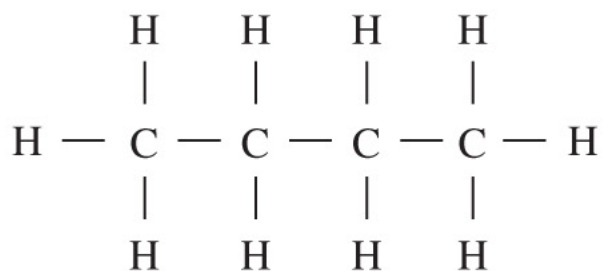


n-butane

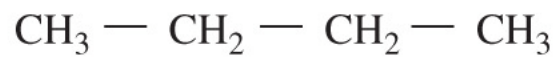
Figure: 02-UN01

Copyright © 2008 Pearson Prentice Hall, Inc.

Normal butane (*n*-butane)



Structural



Linear



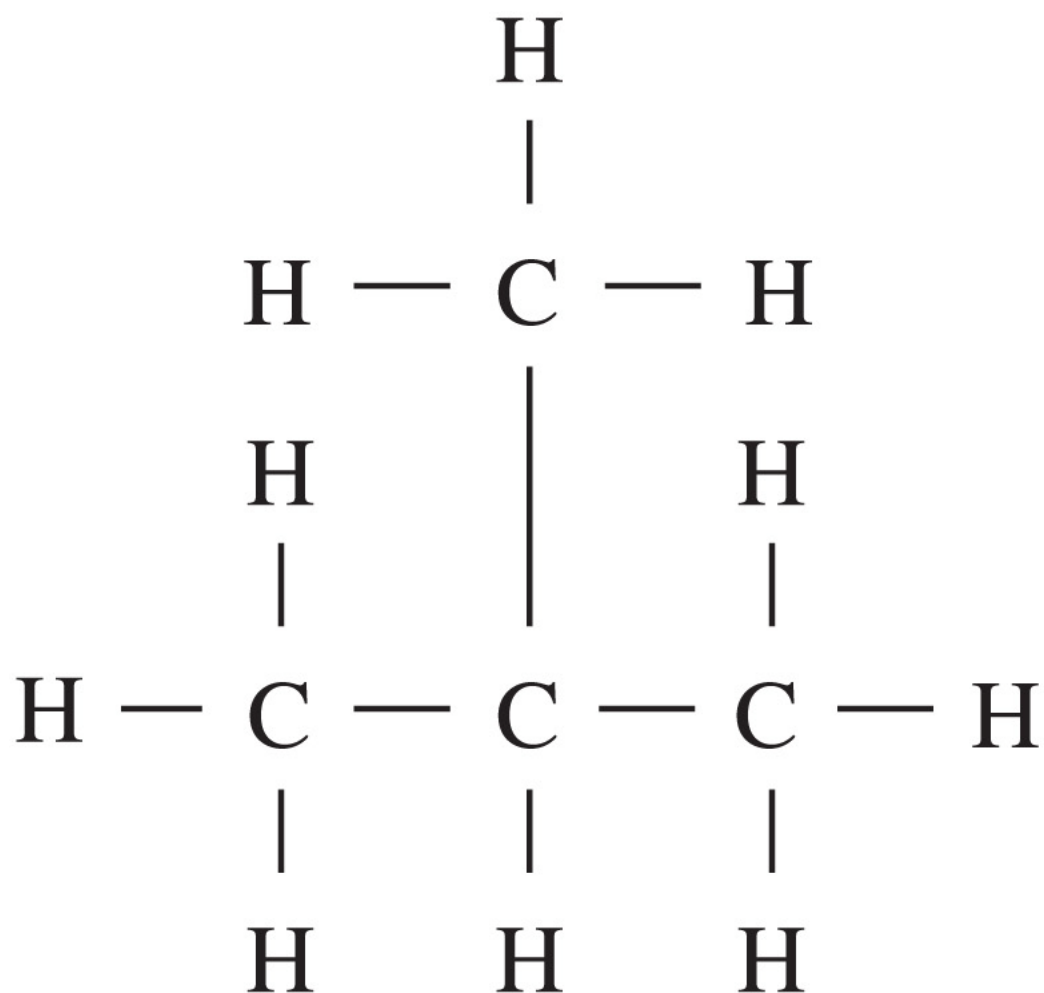
Condensed



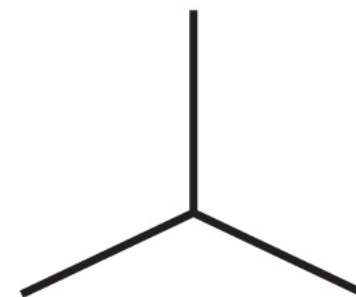
Kinky

Figure: 02-UN02

Copyright © 2008 Pearson Prentice Hall, Inc.



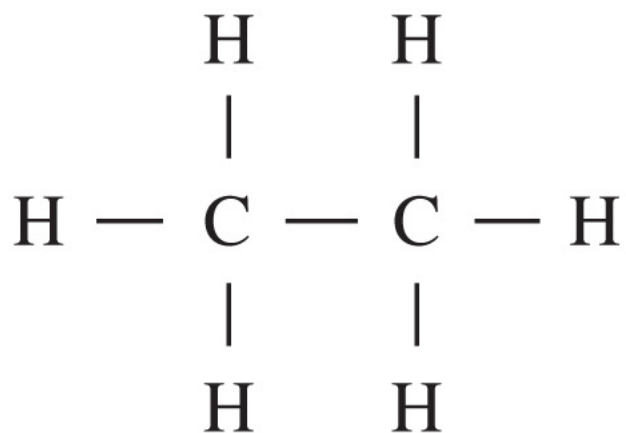
Isobutane (*i*-butane)



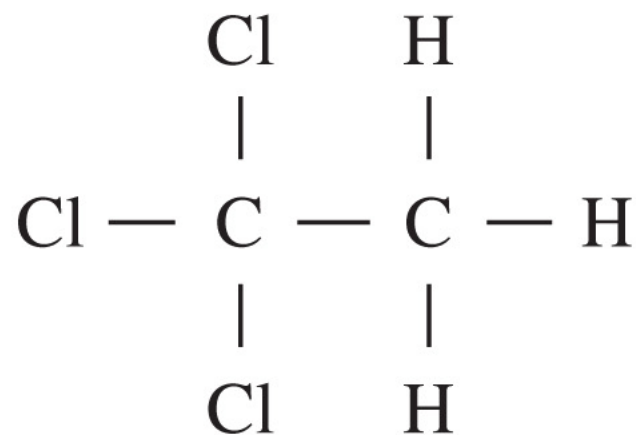
Kinky diagram

Figure: 02-UN03

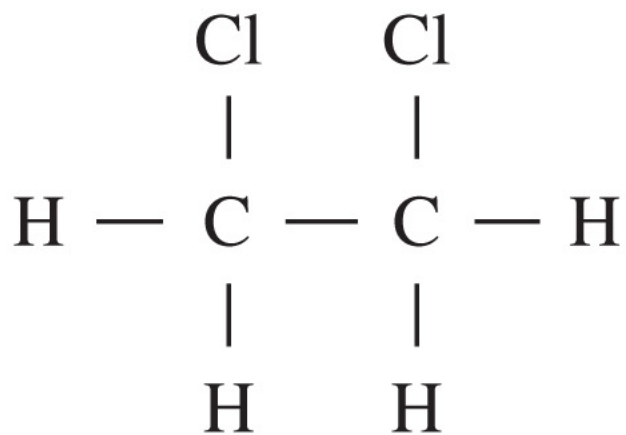
Copyright © 2008 Pearson Prentice Hall, Inc.



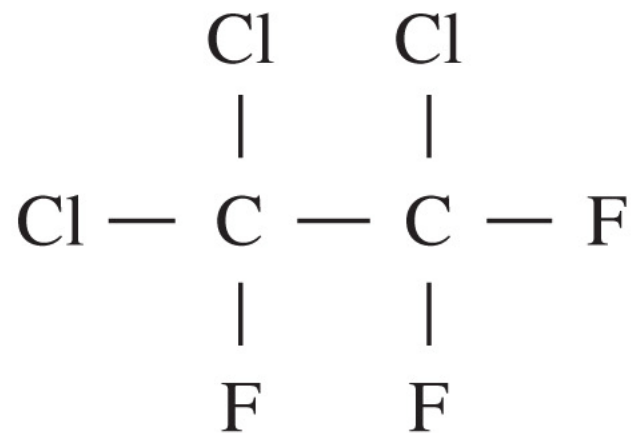
Ethane



1,1,1-Trichloroethane (TCA)



1,2-Dichloroethane
(1,2-DCA)



1,1,2-Trichloro-1,2,2-trifluoroethane
(Freon 113)

Figure: 02-UN04

Copyright © 2008 Pearson Prentice Hall, Inc.

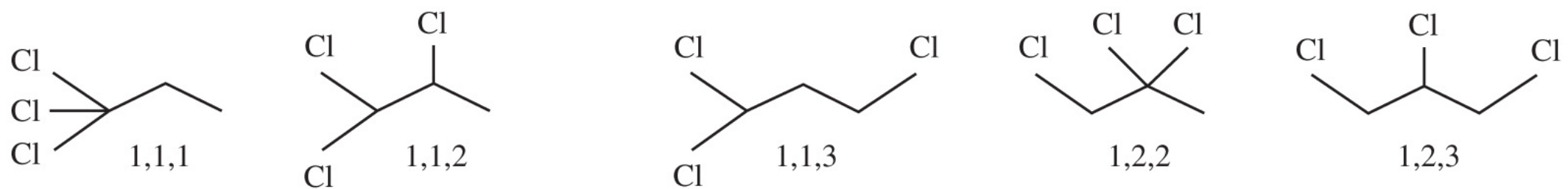
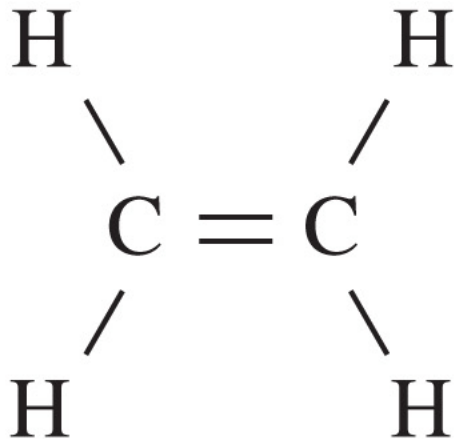
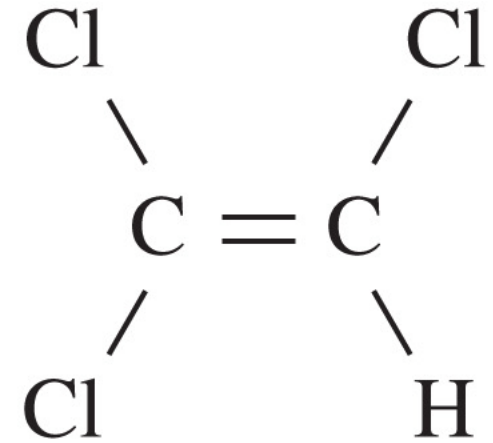


Figure: 02-UN05

Copyright © 2008 Pearson Prentice Hall, Inc.



Ethene (ethylene)

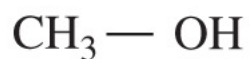


Trichloroethylene (TCE)

Figure: 02-UN06

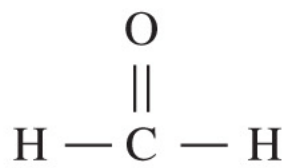
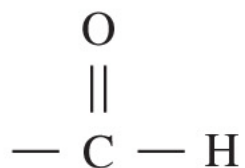
Copyright © 2008 Pearson Prentice Hall, Inc.

Alcohols



Methanol

Aldehydes



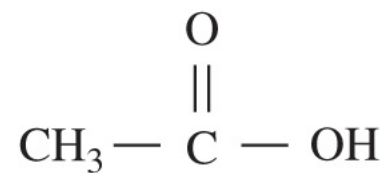
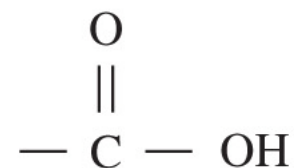
Formaldehyde

Ethers



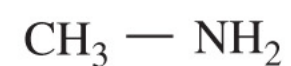
Dimethyl ether

Carboxylic acids



Acetic acid

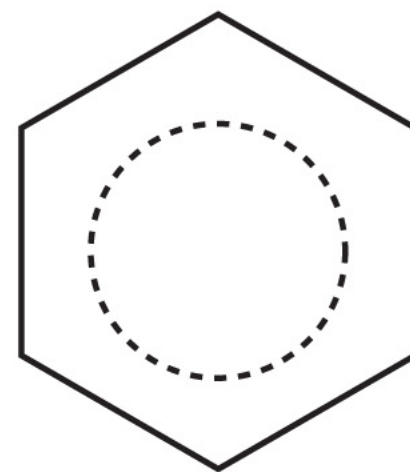
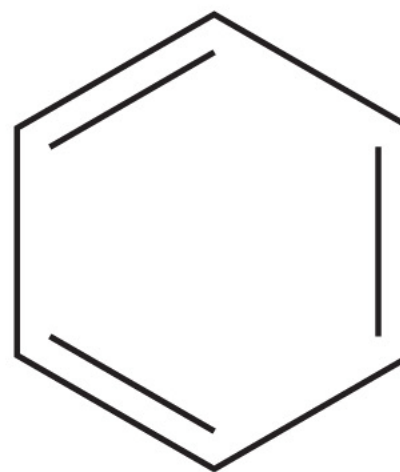
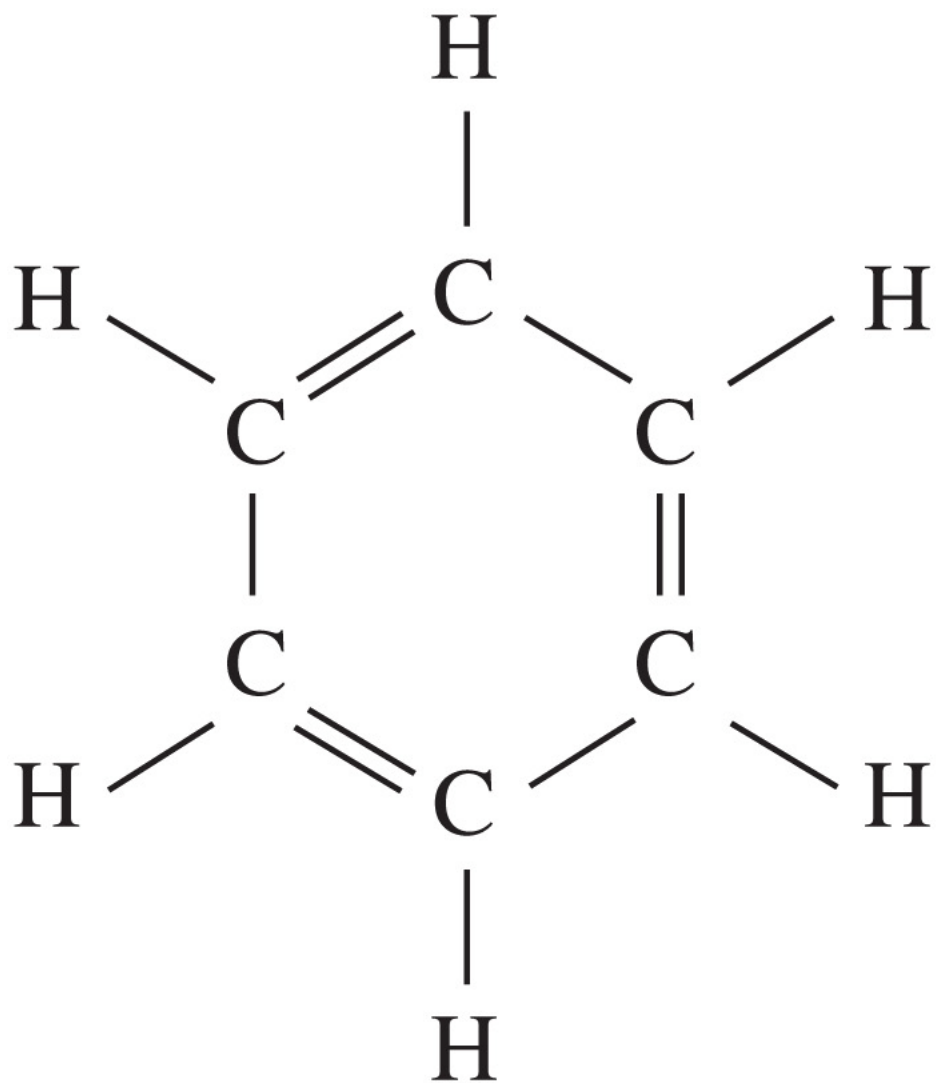
Amines



Methyl amine

Figure: 02-UN07

Copyright © 2008 Pearson Prentice Hall, Inc.



Simplified diagrams

Benzene

Figure: 02-UN08

Copyright © 2008 Pearson Prentice Hall, Inc.

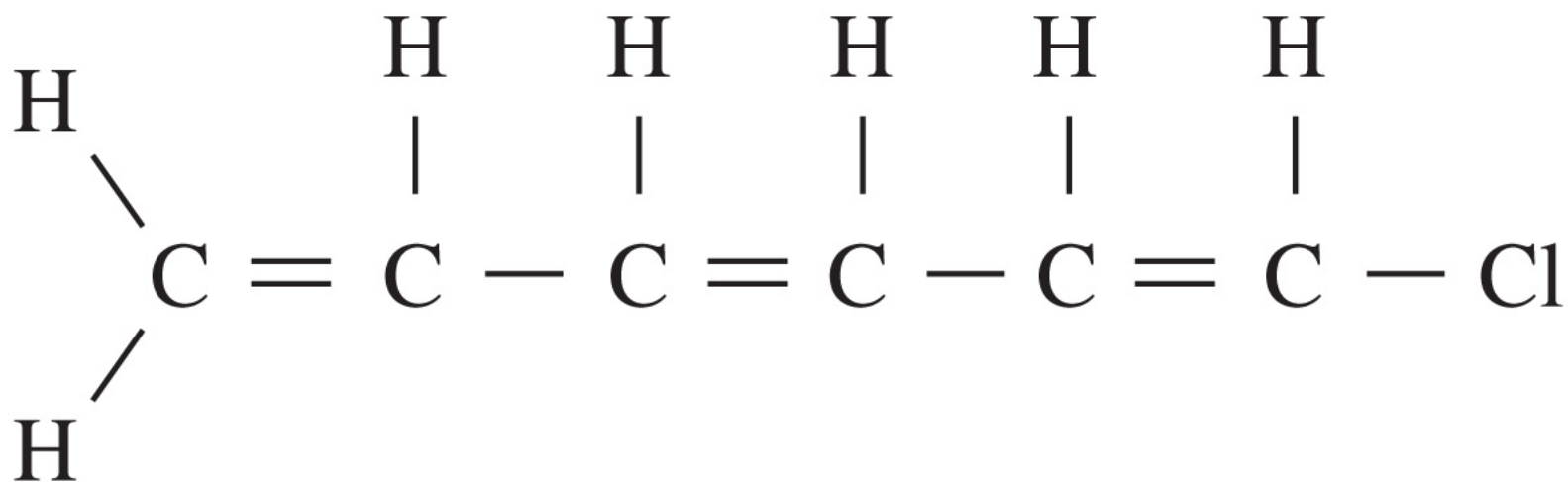
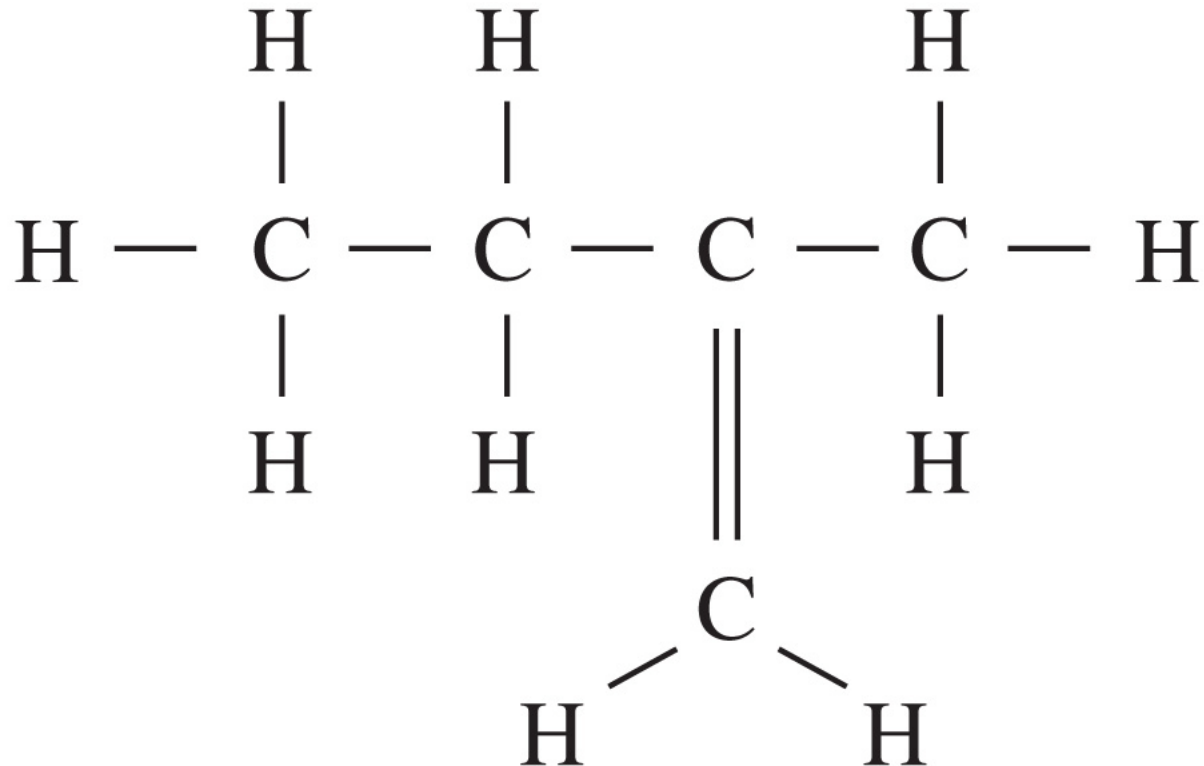
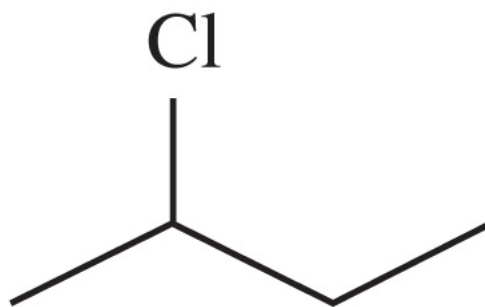


Figure: 02-UN09

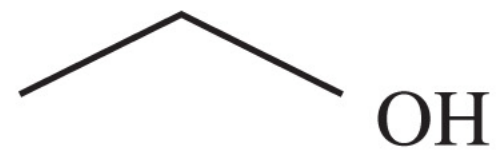
Copyright © 2008 Pearson Prentice Hall, Inc.



(a)



(b)



(c)

Figure: 02-UN10

Copyright © 2008 Pearson Prentice Hall, Inc.