

2MASS Image Service Results

	Search Parameters (Interactive)	query log
Image Type :	Atlas	
Data Set(s) :	All-Sky Release Survey	
Search constraints :	band(s) : H	
Subimage size :	600 arcsec	
Search location :	04h45m06.5s +26d56'32" Equ B1950	
	72.05223 +27.02978	Equatorial J2000
	04h 48m 12.53s +27d 01m 47.2s	Equatorial J2000
	71.27708 +26.94222	Equatorial B1950

Downloads

2MASS Images

Grid-only overlay : [overlay.ps](#)
 Artifact overlay : [overlay_art.ps](#)

Overlay Legend

O : Reference location

X : Filter glint artifacts

X : Persistence artifacts

H-band All-Sky Release Survey Atlas Image

Download: [aH_asky_971203n0220138.fits](#)

Date: 971203

Scan: 22



Hemisphere: n

Image: 138

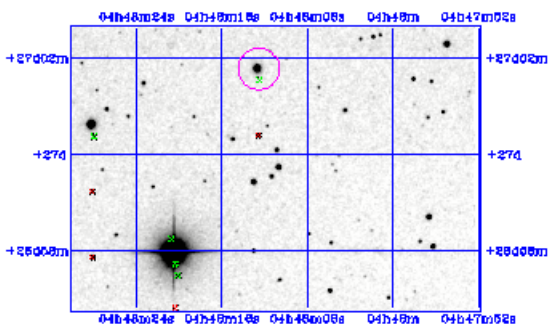


Image Parameters

Reference RA (deg) 7.204595618e+01

Reference Dec (deg) 2.690273454e+01

Reference x-pixel 2.56500e+02

Reference y-pixel -1.55500e+02

Height (pixels) 356

Width (pixels) 512

UT Date (yymmdd) 971203

coadd_key 186680

Seeing FWHM (") 2.70235e+00

Zero Point (mag) 2.06634e+01

Approximate SNR=10 (mag) 1.53530e+01

Interactive Image Preview

pixel min: 546.95

pixel max: 579.743

mapping: linear

invert:

range min: 10.0%

range max: 80.0%+3.0000

show artifacts:

Artifact Location Tables

Filter glint artifacts : [glint.tbl](#)



Persistence artifacts : [pers.tbl](#)

