

## 2MASS Image Service Results

Search Parameters (Interactive)

query log

Image Type : Atlas  
 Data Set(s) : All-Sky Release Survey  
 Search constraints : band(s) : H  
 Subimage size : 600 arcsec  
 Search location : 04h41m21.0s +25d26'13" Equ B1950  
 71.10332 +25.52885 Equatorial J2000  
 04h 44m 24.80s +25d 31m 43.8s Equatorial J2000  
 70.33750 +25.43694 Equatorial B1950

### Downloads

2MASS Images

Grid-only overlay : [overlay.ps](#)Artifact overlay : [overlay\\_art.ps](#)

Overlay Legend

O : Reference location

X : Filter glint artifacts

X : Persistence artifacts

H-band All-Sky Release Survey Atlas Image

Download: [aH\\_asky\\_981121n0730079.fits](#)

Date: 981121

Scan: 73



Hemisphere: n

Image: 79

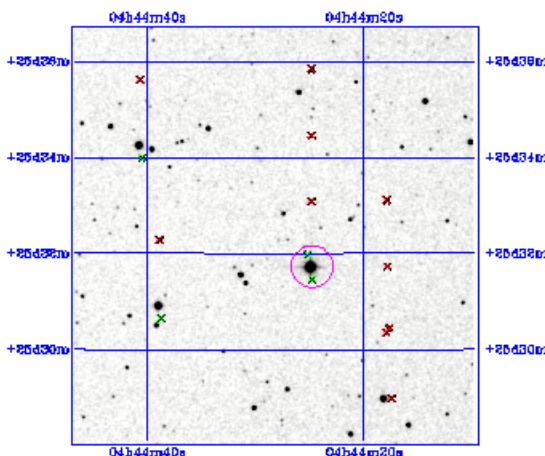


Image Parameters

Reference RA 7.111809430e+01  
(deg)Reference Dec 2.560947889e+01  
(deg)

Reference x-pixel 2.53500e+02

Reference y-pixel 5.12500e+02

Height (pixels) 522

Width (pixels) 509

UT Date 981121  
(yymmdd)coadd\_key 591015  
Seeing FWHM 2.85909e+00  
(")Zero Point 2.07460e+01  
(mag)Approximate SNR=10 1.53360e+01  
(mag)

Interactive Image Preview

pixel min: 656.07

pixel max: 688.806

mapping: linear

invert: 

range min: 10.0%

range max: 80.0%+3.0000

show artifacts: 

Submit

Reset

Artifact Location Tables

Filter glint artifacts : [glint.tbl](#)Persistence artifacts : [pers.tbl](#)