

2MASS Image Service Results

Search Parameters (Interactive)

query log

Image Type : Atlas
 Data Set(s) : All-Sky Release Survey
 Search constraints : band(s) : H
 Subimage size : 600 arcsec
 Search location : 04h40m21.4s +26d56'03" Equ B1950
 70.86333 +27.02719 Equatorial J2000
 04h 43m 27.20s +27d 01m 37.9s Equatorial J2000
 70.08917 +26.93417 Equatorial B1950

Downloads

2MASS Images

Grid-only overlay : [overlay.ps](#)Artifact overlay : [overlay_art.ps](#)

Overlay Legend

O : Reference location

X : Filter glint artifacts

X : Persistence artifacts

H-band All-Sky Release Survey Atlas Image

Download: [aH_asky_981121n0710138.fits](#)

Date: 981121

Hemisphere: n

Scan: 71

Image: 138

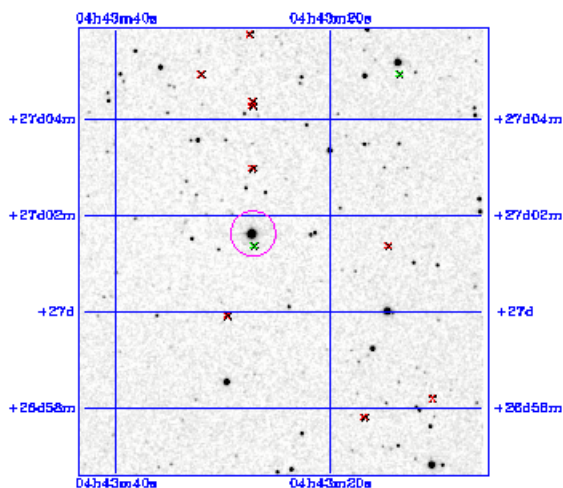


Image Parameters

Reference RA (deg) 7.085178271e+01

Reference Dec (deg) 2.695644409e+01

Reference x-pixel 2.56500e+02

Reference y-pixel 4.65000e+01

Height (pixels) 558

Width (pixels) 512

UT Date (yymmdd) 981121

coadd_key 590974

Seeing FWHM (") 2.67100e+00

Zero Point (mag) 2.07451e+01

Approximate SNR=10 (mag) 1.53570e+01

Interactive Image Preview

pixel min: 665.9

pixel max: 698.613

mapping: linear

invert:

range min: 10.0%

range max: 80.0%+3.0000

show artifacts:

Submit

Reset

Artifact Location Tables

Filter glint artifacts : [glint.tbl](#)Persistence artifacts : [pers.tbl](#)