

## 2MASS Image Service Results

Search Parameters (Interactive)

query log

Image Type : Atlas  
 Data Set(s) : All-Sky Release Survey  
 Search constraints : band(s) : H  
 Subimage size : 600 arcsec  
 Search location : 04h35m58.9s +28d44'38" Equ B1950  
 69.77921 +28.84188 Equatorial J2000  
 04h 39m 07.01s +28d 50m 30.8s Equatorial J2000  
 68.99542 +28.74389 Equatorial B1950

### Downloads

2MASS Images

Grid-only overlay : [overlay.ps](#)  
 Artifact overlay : [overlay\\_art.ps](#)

Overlay Legend

O : Reference location

X : Filter glint artifacts

X : Persistence artifacts

H-band All-Sky Release Survey Atlas Image

Download: [aH\\_asky\\_981014n0900220.fits](#)

Date: 981014

Hemisphere: n

Scan: 90

Image: 220

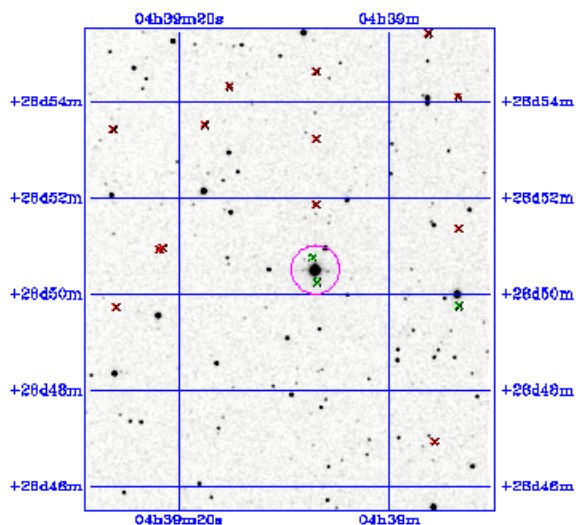


Image Parameters

Reference RA 6.978970029e+01  
(deg)Reference Dec 2.884115095e+01  
(deg)

Reference x-pixel 2.56500e+02

Reference y-pixel 2.98500e+02

Height (pixels) 601

Width (pixels) 512

UT Date (yymmdd) 981014

coadd\_key 514092

Seeing FWHM (") 2.51426e+00

Zero Point (mag) 2.06768e+01

Approximate SNR=10 (mag) 1.55480e+01

Interactive Image Preview

pixel min: 454.546

pixel max: 486.744

mapping: linear

invert: 

range min: 10.0%

range max: 80.0%+3.0000

show artifacts: 

Submit

Reset

Artifact Location Tables

Filter glint artifacts : [glint.tbl](#)Persistence artifacts : [pers.tbl](#)