

2MASS Image Service Results

Search Parameters (Interactive)

query log

Image Type : Atlas
 Data Set(s) : All-Sky Release Survey
 Search constraints : band(s) : H
 Subimage size : 600 arcsec
 Search location : 04h31m49.3s +27d06'03" Equ B1950
 68.72870 +27.20356 Equatorial J2000
 04h 34m 54.89s +27d 12m 12.8s Equatorial J2000
 67.95542 +27.10083 Equatorial B1950

Downloads

2MASS Images

Grid-only overlay : [overlay.ps](#)Artifact overlay : [overlay_art.ps](#)

Overlay Legend

O : Reference location

X : Filter glint artifacts

X : Persistence artifacts

H-band All-Sky Release Survey Atlas Image

Download: [aH_asky_971130n0770126.fits](#)

Date: 971130

Hemisphere: n

Scan: 77

Image: 126

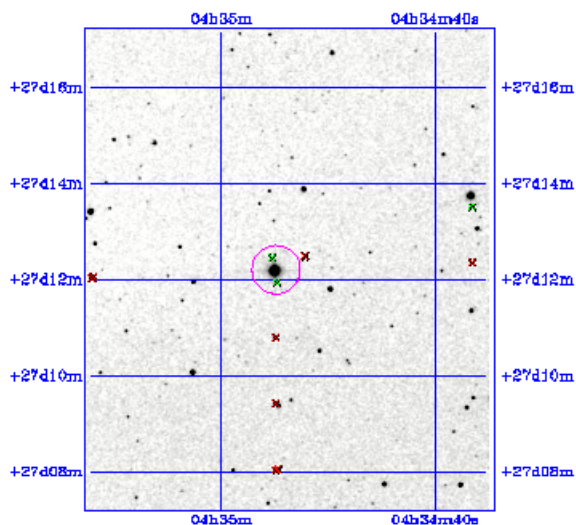


Image Parameters

Reference RA 6.872362971e+01
(deg)Reference Dec 2.717254390e+01
(deg)

Reference x-pixel 2.56500e+02

Reference y-pixel 1.89500e+02

Height (pixels) 601

Width (pixels) 512

UT Date (yymmdd) 971130

coadd_key 1611575

Seeing FWHM (") 2.63965e+00

Zero Point (mag) 2.07063e+01

Approximate SNR=10 (mag) 1.52260e+01

Interactive Image Preview

pixel min: 827.554

pixel max: 860.756

mapping: linear

invert:

range min: 10.0%

range max: 80.0%+3.0000

show artifacts:

Submit

Reset

Artifact Location Tables

Filter glint artifacts : [glint.tbl](#)Persistence artifacts : [pers.tbl](#)