

2MASS Image Service Results

Search Parameters (Interactive)

[query log](#)

Image Type : Atlas
 Data Set(s) : All-Sky Release Survey
 Search constraints : band(s) : H
 Subimage size : 600 arcsec
 Search location : 04h43m07.5s +25d56'46" Equ B1950
 71.55029 +26.03597 Equatorial J2000
 04h 46m 12.07s +26d 02m 09.5s Equatorial J2000
 70.78125 +25.94611 Equatorial B1950

Downloads

2MASS Images

Grid-only overlay : [overlay.ps](#)
 Artifact overlay : [overlay_art.ps](#)

Overlay Legend

O : Reference location

X : Filter glint artifacts

X : Persistence artifacts

H-band All-Sky Release Survey Atlas Image

Download: [aH_asky_971203n0180173.fits](#)

Date: 971203
 Scan: 18



Hemisphere: n
 Image: 173

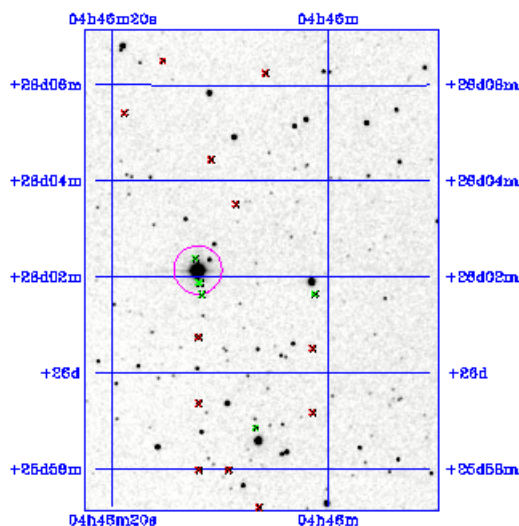


Image Parameters

Reference RA (*deg*) 7.151509891e+01
 Reference Dec (*deg*) 2.609419514e+01
 Reference x-pixel 2.56500e+02
 Reference y-pixel 5.10500e+02
 Height (*pixels*) 601
 Width (*pixels*) 443
 UT Date (*yymmdd*) 971203
 coadd_key 186591
 Seeing FWHM (") 2.85909e+00
 Zero Point (*mag*) 2.06614e+01
 Approximate SNR=10 (*mag*) 1.53780e+01

Interactive Image Preview

pixel min: 539.442
 pixel max: 571.973
 mapping: linear
 invert:
 range min: 10.0%
 range max: 80.0%+3.0000
 show artifacts:

Artifact Location Tables

Filter glint artifacts : [glint.tbl](#)



Persistence artifacts : [pers.tbl](#)

