

## 2MASS Image Service Results

Search Parameters (Interactive)

query log

Image Type : Atlas  
 Data Set(s) : All-Sky Release Survey  
 Search constraints : band(s) : H  
 Subimage size : 600 arcsec  
 Search location : 04h31m48.5s +24d08'30" Equ B1950  
 68.70890 +24.24445 Equatorial J2000  
 04h 34m 50.14s +24d 14m 40.0s Equatorial J2000  
 67.95208 +24.14167 Equatorial B1950

### Downloads

2MASS Images

Grid-only overlay : [overlay.ps](#)Artifact overlay : [overlay\\_art.ps](#)

Overlay Legend

O : Reference location

X : Filter glint artifacts

X : Persistence artifacts

H-band All-Sky Release Survey Atlas Image

Download: [aH\\_asky\\_971130n0770256.fits](#)

Date: 971130

Hemisphere: n

Scan: 77

Image: 256

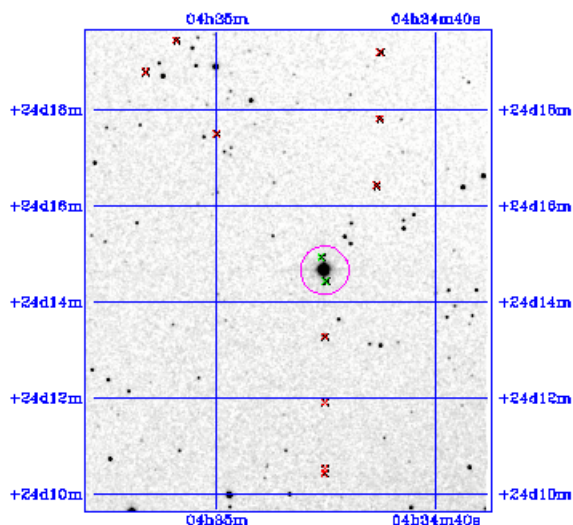


Image Parameters

Reference RA (deg) 6.872341846e+01

Reference Dec (deg) 2.420865501e+01

Reference x-pixel 2.53500e+02

Reference y-pixel 1.72500e+02

Height (pixels) 602

Width (pixels) 509

UT Date (yymmdd) 971130

coadd\_key 1611586

Seeing FWHM (") 2.60830e+00

Zero Point (mag) 2.07062e+01

Approximate SNR=10 (mag) 1.52260e+01

Interactive Image Preview

pixel min: 834.683

pixel max: 867.846

mapping: linear

invert: 

range min: 10.0%

range max: 80.0%+3.0000

show artifacts: 

Submit

Reset

Artifact Location Tables

Filter glint artifacts : [glint.tbl](#)Persistence artifacts : [pers.tbl](#)