

2MASS Image Service Results

Search Parameters (Interactive)

query log

Image Type : Atlas
 Data Set(s) : All-Sky Release Survey
 Search constraints : band(s) : H
 Subimage size : 600 arcsec
 Search location : 04h24m31.7s +24d57'03" Equ B1950
 66.89176 +25.06177 Equatorial J2000
 04h 27m 34.02s +25d 03m 42.4s Equatorial J2000
 66.13208 +24.95083 Equatorial B1950

Downloads

2MASS Images

Grid-only overlay : [overlay.ps](#)Artifact overlay : [overlay_art.ps](#)

Overlay Legend

O : Reference location

X : Filter glint artifacts

X : Persistence artifacts

H-band All-Sky Release Survey Atlas Image

Download: [aH_asky_971130n0510220.fits](#)

Date: 971130

Hemisphere: n

Scan: 51

Image: 220

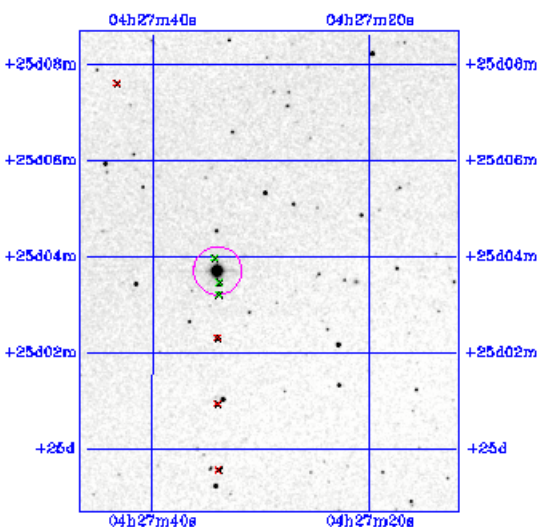


Image Parameters

Reference RA 6.686643027e+01
(deg)Reference Dec 2.501547872e+01
(deg)

Reference x-pixel 2.56500e+02

Reference y-pixel 1.34500e+02

Height (pixels) 601

Width (pixels) 474

UT Date 971130
(yymmdd)

coadd_key 1611261

Seeing FWHM (") 2.63965e+00

Zero Point (mag) 2.07042e+01

Approximate 1.55020e+01
SNR=10 (mag)

Interactive Image Preview

pixel min: 534.743

pixel max: 567.455

mapping: linear

invert:

range min: 10.0%

range max: 80.0%+3.0000

show artifacts:

Submit

Reset

Artifact Location Tables

Filter glint artifacts : [glint.tbl](#)Persistence artifacts : [pers.tbl](#)