

## 2MASS Image Service Results

Search Parameters (Interactive)

query log

Image Type : Atlas  
 Data Set(s) : All-Sky Release Survey  
 Search constraints : band(s) : H  
 Subimage size : 600 arcsec  
 Search location : 16h37m16.4s -23d47'56" Equ B1950  
 250.07450 -23.89551 Equatorial J2000  
 16h 40m 17.88s -23d 53m 43.8s Equatorial J2000  
 249.31833 -23.79889 Equatorial B1950

### Downloads

2MASS Images

Grid-only overlay : [overlay.ps](#)Artifact overlay : [overlay\\_art.ps](#)

Overlay Legend

O : Reference location

X : Filter glint artifacts

X : Persistence artifacts

H-band All-Sky Release Survey Atlas Image

Download: [aH\\_asky\\_980809s0500267.fits](#)

Date: 980809

Hemisphere: s

Scan: 50

Image: 267

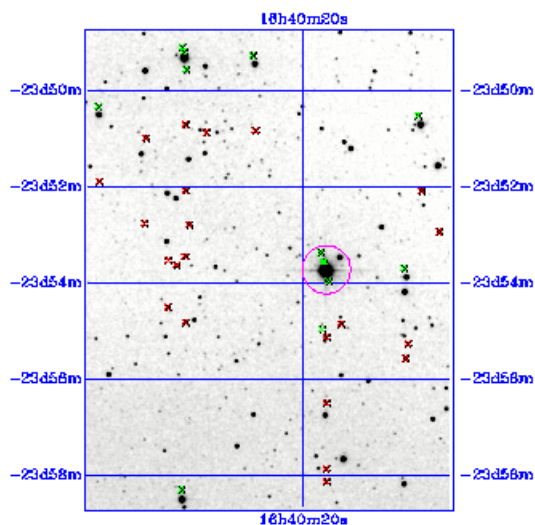


Image Parameters

Reference RA (*deg*) 2.501040745e+02Reference Dec (*deg*) -2.389083388e+01

Reference x-pixel 2.05500e+02

Reference y-pixel 3.18000e+02

Height (*pixels*) 601Width (*pixels*) 461UT Date (*yymmdd*) 980809

coadd\_key 54579

Seeing FWHM (") 2.42021e+00

Zero Point (*mag*) 2.04111e+01Approximate SNR=10 (*mag*) 1.56750e+01

Interactive Image Preview

pixel min: 279.78

pixel max: 313.035

mapping: linear

invert: 

range min: 10.0%

range max: 80.0%+3.0000

show artifacts: 

Artifact Location Tables

Filter glint artifacts : [glint.tbl](#)Persistence artifacts : [pers.tbl](#)