

2MASS Image Service Results

Search Parameters (Interactive)

query log

Image Type : Atlas
 Data Set(s) : All-Sky Release Survey
 Search constraints : band(s) : H
 Subimage size : 600 arcsec
 Search location : 16h19m18.8s -24d14'47" Equ B1950
 245.58322 -24.36316 Equatorial J2000
 16h 22m 19.97s -24d 21m 47.4s Equatorial J2000
 244.82833 -24.24639 Equatorial B1950

Downloads

2MASS Images

Grid-only overlay : [overlay.ps](#)
 Artifact overlay : [overlay_art.ps](#)

Overlay Legend

O : Reference location

X : Filter glint artifacts

X : Persistence artifacts

H-band All-Sky Release Survey Atlas Image

Download: [aH_asky_980321s0720245.fits](#)

Date: 980321

Scan: 72



Hemisphere: s
 Image: 245

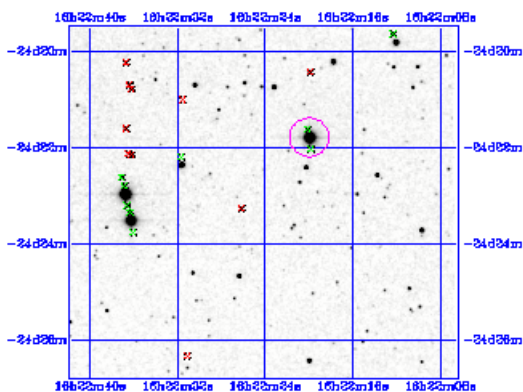


Image Parameters

Reference RA 2.456047974e+02
 (deg)
 Reference Dec -2.446648997e+01
 (deg)
 Reference x-pixel 2.30500e+02
 Reference y-pixel -7.05000e+01
 Height (pixels) 441
 Width (pixels) 486
 UT Date 980321
 (yymmdd)
 coadd_key 1548473
 Seeing FWHM 2.51426e+00
 (")
 Zero Point (mag) 2.04117e+01
 Approximate SNR=10 (mag) 1.56840e+01

Interactive Image Preview

pixel min: 280.156
 pixel max: 311.88
 mapping: linear
 invert:
 range min: 10.0%
 range max: 80.0%+3.0000
 show artifacts:

Submit

Reset

Artifact Location Tables

Filter glint artifacts : [glint.tbl](#)Persistence artifacts : [pers.tbl](#)