

## 2MASS Image Service Results

### Search Parameters (Interactive)

query log

Image Type :	Atlas		
Data Set(s) :	All-Sky Release Survey		
Search constraints :	band(s) :	H	
Subimage size :	600 arcsec		
Search location :	16h18m56.4s -24d22'40" Equ B1950		
	245.49050	-24.49496	Equatorial J2000
	16h 21m 57.72s	-24d 29m 41.9s	Equatorial J2000
	244.73500	-24.37778	Equatorial B1950

### Downloads

#### 2MASS Images

Grid-only overlay : [overlay.ps](#)  
 Artifact overlay : [overlay\\_art.ps](#)

#### Overlay Legend

O : Reference location     
 X : Filter glint artifacts     
 X : Persistence artifacts

#### H-band All-Sky Release Survey Atlas Image

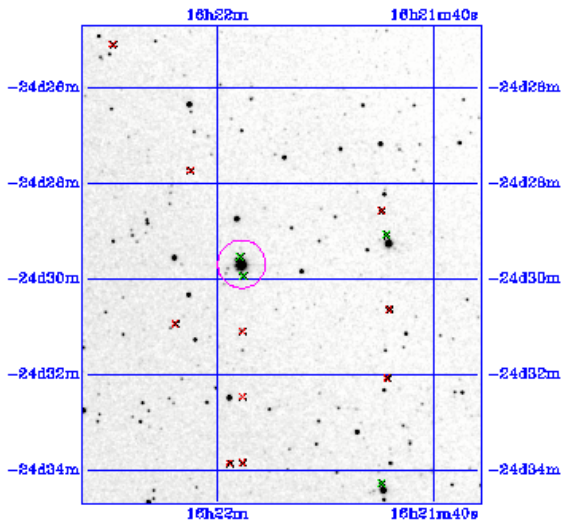
Download: [aH\\_asky\\_980321s0710033.fits](#)

Date: 980321

Scan: 71



Hemisphere: s  
Image: 33



#### Image Parameters

Reference RA (deg)	2.454738226e+02
Reference Dec (deg)	-2.453411444e+01
Reference x-pixel	2.56500e+02
Reference y-pixel	1.60500e+02
Height (pixels)	601
Width (pixels)	503
UT Date (yymmdd)	980321
coadd_key	1548432
Seeing FWHM (")	2.51426e+00
Zero Point (mag)	2.04108e+01
Approximate SNR=10 (mag)	1.56570e+01

#### Interactive Image Preview

pixel min:	297.857
pixel max:	330.178
mapping:	linear
invert:	<input checked="" type="checkbox"/>
range min:	10.0%
range max:	80.0%+3.0000
show artifacts:	<input checked="" type="checkbox"/>
<input type="button" value="Submit"/> <input type="button" value="Reset"/>	

#### Artifact Location Tables

Filter glint artifacts : [glint.tbl](#)  
 Persistence artifacts : [pers.tbl](#)

