

2MASS Image Service Results

Search Parameters (Interactive)

[query log](#)

Image Type : Atlas
 Data Set(s) : All-Sky Release Survey
 Search constraints : band(s) : H
 Subimage size : 600 arcsec
 Search location : 04h34m12.0s +25d11'30" Equ B1950
 69.31306 +25.29173 Equatorial J2000
 04h 37m 15.13s +25d 17m 30.2s Equatorial J2000
 68.55000 +25.19167 Equatorial B1950

Downloads

2MASS Images

 Grid-only overlay : [overlay.ps](#)

 Artifact overlay : [overlay_art.ps](#)

Overlay Legend

O : Reference location

X : Filter glint artifacts

X : Persistence artifacts

H-band All-Sky Release Survey Atlas Image

 Download: [aH_asky_981121n0610068.fits](#)


Date: 981121

Hemisphere: n

Scan: 61

Image: 68

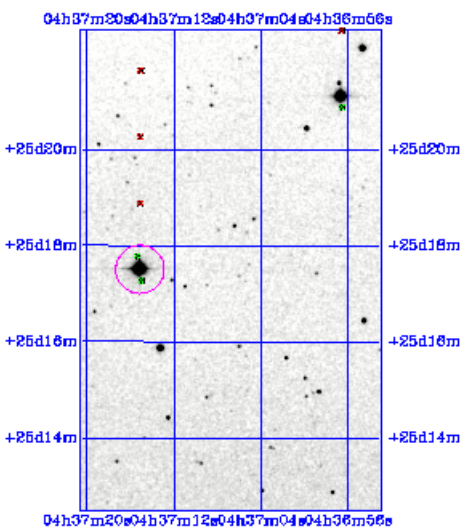


Image Parameters

Reference RA (*deg*) 6.925772568e+01
 Reference Dec (*deg*) 2.534033943e+01
 Reference x-pixel 2.56500e+02
 Reference y-pixel 4.76500e+02
 Height (*pixels*) 601
 Width (*pixels*) 376
 UT Date (*yyymmdd*) 981121
 coadd_key 590876
 Seeing FWHM (") 2.82774e+00
 Zero Point (*mag*) 2.07423e+01
 Approximate SNR=10
 (*mag*) 1.52600e+01

Interactive Image Preview

pixel min: 711.95
 pixel max: 745.531
 mapping: linear
 invert:
 range min: 10.0%
 range max: 80.0%+3.0000
 show artifacts:

Artifact Location Tables

 Filter glint artifacts : [glint.tbl](#)

 Persistence artifacts : [pers.tbl](#)
