

## 2MASS Image Service Results

Search Parameters (Interactive)

query log

Image Type : Atlas  
 Data Set(s) : All-Sky Release Survey  
 Search constraints : band(s) : H  
 Subimage size : 600 arcsec  
 Search location : 04h41m14.3s +25d19'20" Equ B1950  
 71.07474 +25.41425 Equatorial J2000  
 04h 44m 17.94s +25d 24m 51.3s Equatorial J2000  
 70.30958 +25.32222 Equatorial B1950

### Downloads

2MASS Images

Grid-only overlay : [overlay.ps](#)  
 Artifact overlay : [overlay\\_art.ps](#)

Overlay Legend

O : Reference location

X : Filter glint artifacts

X : Persistence artifacts

H-band All-Sky Release Survey Atlas Image

Download: [aH\\_asky\\_981121n0730068.fits](#)

Date: 981121

Scan: 73



Hemisphere: n

Image: 68

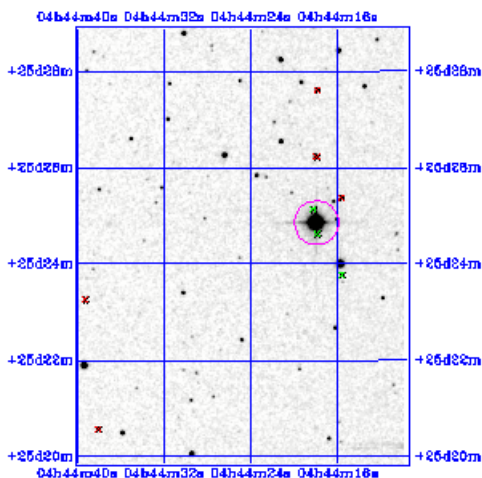


Image Parameters

Reference RA (*deg*) 7.111809713e+01  
 Reference Dec (*deg*) 2.534003444e+01  
 Reference x-pixel 1.60500e+02  
 Reference y-pixel 3.45000e+01  
 Height (*pixels*) 546  
 Width (*pixels*) 416  
 UT Date (*yymmdd*) 981121  
 coadd\_key 591014  
 Seeing FWHM (") 2.79640e+00  
 Zero Point (*mag*) 2.07460e+01  
 Approximate SNR=10  
 (*mag*) 1.53360e+01

Interactive Image Preview

pixel min: 650.52  
 pixel max: 683.221  
 mapping: linear  
 invert:   
 range min: 10.0%  
 range max: 80.0%+3.0000  
 show artifacts:

Submit

Reset

Artifact Location Tables

Filter glint artifacts : [glint.tbl](#)Persistence artifacts : [pers.tbl](#)