

## 2MASS Image Service Results

Search Parameters (Interactive)

[query log](#)

Image Type :	Atlas		
Data Set(s) :	All-Sky Release Survey		
Search constraints :	band(s) :	H	
Subimage size :	600 arcsec		
Search location :	16h23m01.7s -24d16'50" Equ B1950		
	246.51298	-24.39321	Equatorial J2000
	16h 26m 03.12s	-24d 23m 35.6s	Equatorial J2000
	245.75708	-24.28056	Equatorial B1950

### Downloads

*2MASS Images*

Grid-only overlay : [overlay.ps](#)  
 Artifact overlay : [overlay\\_art.ps](#)

Overlay Legend

O : Reference location     
 X : Filter glint artifacts     
 X : Persistence artifacts

H-band All-Sky Release Survey Atlas Image

Download: [aH\\_asky\\_000316s1130245.fits](#)



Date: 000316  
 Scan: 113

Hemisphere: s  
 Image: 245

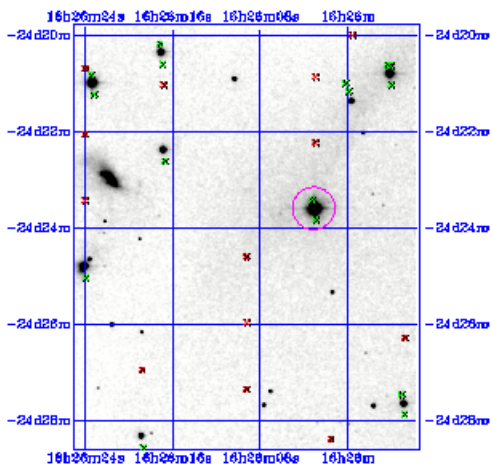




Image Parameters

Reference RA ( <i>deg</i> )	2.465510377e+02
Reference Dec ( <i>deg</i> )	-2.447209068e+01
Reference x-pixel	1.76500e+02
Reference y-pixel	1.75000e+01
Height ( <i>pixels</i> )	529
Width ( <i>pixels</i> )	432
UT Date ( <i>yymmdd</i> )	000316
coadd_key	1094706
Seeing FWHM (")	2.38886e+00
Zero Point ( <i>mag</i> )	2.03818e+01
Approximate SNR=10 ( <i>mag</i> )	1.55520e+01

Interactive Image Preview 

pixel min:	390.108
pixel max:	423.077
mapping:	linear 
invert:	<input checked="" type="checkbox"/>
range min:	10.0%
range max:	80.0%+3.0000
show artifacts:	<input checked="" type="checkbox"/>
<input type="button" value="Submit"/>	<input type="button" value="Reset"/>

Artifact Location Tables

Filter glint artifacts : [glint.tbl](#)



Persistence artifacts : [pers.tbl](#)

