

2MASS Image Service Results

Search Parameters (Interactive)

[query log](#)

Image Type : Atlas
 Data Set(s) : All-Sky Release Survey
 Search constraints : band(s) : H
 Subimage size : 600 arcsec
 Search location : 20h30m43.7s +41d03'53" Equ B1950
 308.13090 +41.23574 Equatorial J2000
 20h 32m 31.42s +41d 14m 08.7s Equatorial J2000
 307.68208 +41.06472 Equatorial B1950

Downloads

2MASS Images

Grid-only overlay : [overlay.ps](#)
 Artifact overlay : [overlay_art.ps](#)

Overlay Legend

O : Reference location

X : Filter glint artifacts

X : Persistence artifacts

H-band All-Sky Release Survey Atlas Image

Download: [aH_asky_980621n0970033.fits](#)



Date: 980621
 Scan: 97

Hemisphere: n
 Image: 33

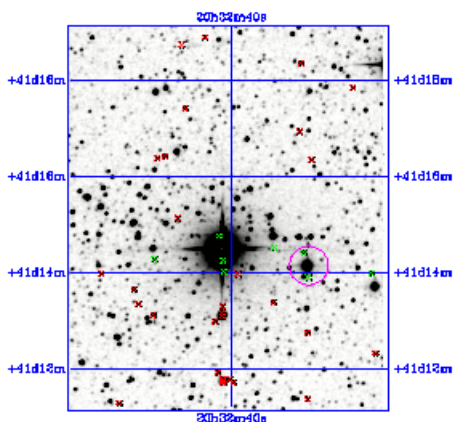


Image Parameters

Reference RA (*deg*) 3.081890384e+02
 Reference Dec (*deg*) 4.132773174e+01
 Reference x-pixel 1.44500e+02
 Reference y-pixel 5.12500e+02
 Height (*pixels*) 481
 Width (*pixels*) 400
 UT Date (*yymmdd*) 980621
 coadd_key 442776
 Seeing FWHM (") 2.82774e+00
 Zero Point (*mag*) 2.07189e+01
 Approximate SNR=10
 (*mag*) 1.55620e+01

Interactive Image Preview

pixel min: 348.861
 pixel max: 385.569
 mapping: linear
 invert:
 range min: 10.0%
 range max: 80.0%+3.0000
 show artifacts:

Artifact Location Tables

Filter glint artifacts : [glint.tbl](#)



Persistence artifacts : [pers.tbl](#)

