

2MASS Image Service Results

Search Parameters (Interactive)

[query log](#)

Image Type : Atlas
 Data Set(s) : All-Sky Release Survey
 Search constraints : band(s) : H
 Subimage size : 600 arcsec
 Search location : 20h31m26.5s +41d10'04" Equ B1950
 308.30900 +41.33948 Equatorial J2000
 20h 33m 14.16s +41d 20m 22.1s Equatorial J2000
 307.86042 +41.16778 Equatorial B1950

Downloads

2MASS Images

Grid-only overlay : [overlay.ps](#)Artifact overlay : [overlay_art.ps](#)

Overlay Legend

O : Reference location

X : Filter glint artifacts

X : Persistence artifacts

H-band All-Sky Release Survey Atlas Image

Download: [aH_asky_980621n0980244.fits](#)

Date: 980621

Hemisphere: n

Scan: 98

Image: 244

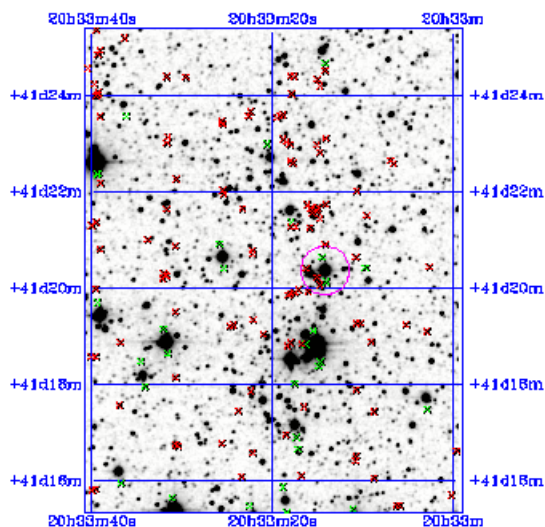


Image Parameters

Reference RA 3.083400661e+02
 (deg)
 Reference Dec 4.138308486e+01
 (deg)
 Reference x-pixel 2.17500e+02
 Reference y-pixel 4.58500e+02
 Height (pixels) 602
 Width (pixels) 473
 UT Date (yyymmdd) 980621
 coadd_key 442817
 Seeing FWHM (") 2.89044e+00
 Zero Point (mag) 2.07190e+01
 Approximate SNR=10 (mag) 1.55270e+01

Interactive Image Preview

pixel min: 401.547

pixel max: 438.752

mapping: linear

invert:

range min: 10.0%

range max: 80.0%+3.0000

show artifacts:

Artifact Location Tables

Filter glint artifacts : [glint.tbl](#)Persistence artifacts : [pers.tbl](#)