

2MASS Image Service Results

Search Parameters (Interactive)

query log

Image Type : Atlas
 Data Set(s) : All-Sky Release Survey
 Search constraints : band(s) : H
 Subimage size : 600 arcsec
 Search location : 20h30m26.3s +41d16'57" Equ B1950
 308.05673 +41.45324 Equatorial J2000
 20h 32m 13.61s +41d 27m 11.7s Equatorial J2000
 307.60958 +41.28250 Equatorial B1950

Downloads

2MASS Images

Grid-only overlay : [overlay.ps](#)Artifact overlay : [overlay_art.ps](#)

Overlay Legend

O : Reference location

X : Filter glint artifacts

X : Persistence artifacts

H-band All-Sky Release Survey Atlas Image

Download: [aH_asky_980621n0960244.fits](#)

Date: 980621

Hemisphere: n

Scan: 96

Image: 244

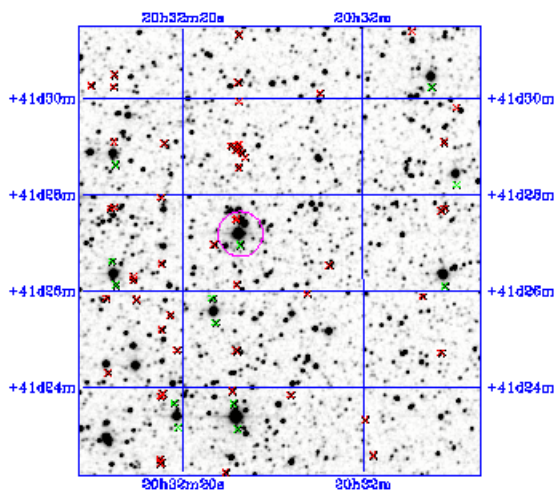


Image Parameters

Reference RA 3.080370887e+02
(deg)Reference Dec 4.138266383e+01
(deg)

Reference x-pixel 2.56500e+02

Reference y-pixel 4.75000e+01

Height (pixels) 559

Width (pixels) 503

UT Date 980621
(ymmdd)coadd_key 442771
Seeing FWHM 2.85909e+00
(")Zero Point 2.07186e+01
(mag)Approximate SNR=10 1.55590e+01
(mag)Interactive Image Preview [?](#)

pixel min: 352.824

pixel max: 386.802

mapping: linear

invert:

range min: 10.0%

range max: 80.0%+3.0000

show artifacts:

Submit

Reset

Artifact Location Tables

Filter glint artifacts : [glint.tbl](#)Persistence artifacts : [pers.tbl](#)