

2MASS Image Service Results

	Search Parameters (Interactive)	query log
Image Type :	Atlas	
Data Set(s) :	All-Sky Release Survey	
Search constraints :	band(s) : H	
Subimage size :	600 arcsec	
Search location :	20h31m29.7s +41d06'52" Equ B1950	
	308.32273 +41.28620	Equatorial J2000
	20h 33m 17.45s +41d 17m 10.3s	Equatorial J2000
	307.87375 +41.11444	Equatorial B1950

Downloads

2MASS Images

Grid-only overlay : [overlay.ps](#)
 Artifact overlay : [overlay_art.ps](#)

Overlay Legend

O : Reference location

X : Filter glint artifacts

X : Persistence artifacts

H-band All-Sky Release Survey Atlas Image

Download: [aH_asky_980621n0980244.fits](#)

Date: 980621
 Scan: 98



Hemisphere: n
 Image: 244

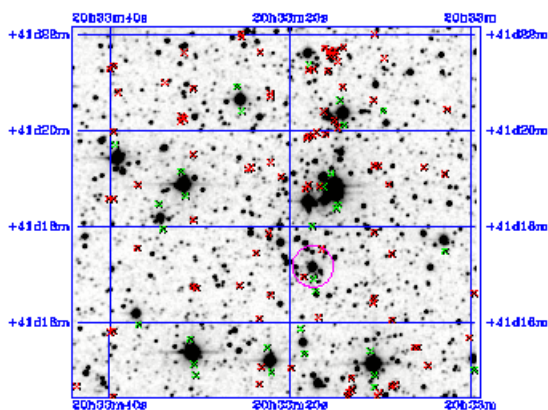


Image Parameters

Reference RA (deg) 3.083400661e+02
 Reference Dec (deg) 4.138308486e+01
 Reference x-pixel 2.55500e+02
 Reference y-pixel 5.12500e+02
 Height (pixels) 464
 Width (pixels) 511
 UT Date (yymmdd) 980621
 coadd_key 442817
 Seeing FWHM (") 2.89044e+00
 Zero Point (mag) 2.07190e+01
 Approximate SNR=10 (mag) 1.55270e+01

Interactive Image Preview

pixel min: 401.253
 pixel max: 437.942
 mapping: linear
 invert:
 range min: 10.0%
 range max: 80.0%+3.0000
 show artifacts:

Submit

Reset

Artifact Location Tables

Filter glint artifacts : [glint.tbl](#)



Persistence artifacts : [pers.tbl](#)

