

2MASS Image Service Results

Search Parameters (Interactive)

query log

Image Type : Atlas
 Data Set(s) : All-Sky Release Survey
 Search constraints : band(s) : H
 Subimage size : 600 arcsec
 Search location : 20h30m40.1s +41d18'37" Equ B1950
 308.11419 +41.48124 Equatorial J2000
 20h 32m 27.41s +41d 28m 52.5s Equatorial J2000
 307.66708 +41.31028 Equatorial B1950

Downloads

2MASS Images

Grid-only overlay : [overlay.ps](#)
 Artifact overlay : [overlay_art.ps](#)

Overlay Legend

O : Reference location

X : Filter glint artifacts

X : Persistence artifacts

H-band All-Sky Release Survey Atlas Image

Download: [aH_asky_980621n0970021.fits](#) 

Date: 980621 Hemisphere: n
 Scan: 97 Image: 21

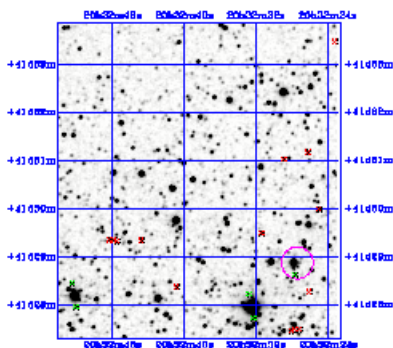



Image Parameters

Reference RA (*deg*) 3.081888739e+02
 Reference Dec (*deg*) 4.159717616e+01
 Reference x-pixel 9.95000e+01
 Reference y-pixel 5.12500e+02
 Height (*pixels*) 395
 Width (*pixels*) 355
 UT Date (*yymmdd*) 980621
 coadd_key 442775
 Seeing FWHM (") 2.82774e+00
 Zero Point (*mag*) 2.07189e+01
 Approximate SNR=10 (*mag*) 1.55620e+01

Interactive Image Preview 

pixel min: 349.283
 pixel max: 383.526
 mapping: linear
 invert:
 range min: 10.0%
 range max: 80.0%+3.0000
 show artifacts:

Submit

Reset

Artifact Location Tables

Filter glint artifacts : [glint.tbl](#) Persistence artifacts : [pers.tbl](#) 