

2MASS Image Service Results

Search Parameters (Interactive)

query log

Image Type : Atlas
 Data Set(s) : All-Sky Release Survey
 Search constraints : band(s) : H
 Subimage size : 600 arcsec
 Search location : 20h30m29.1s +41d15'21" Equ B1950
 308.06861 +41.42662 Equatorial J2000
 20h 32m 16.47s +41d 25m 35.8s Equatorial J2000
 307.62125 +41.25583 Equatorial B1950

Downloads

2MASS Images

Grid-only overlay : [overlay.ps](#)Artifact overlay : [overlay_art.ps](#)

Overlay Legend

O : Reference location

X : Filter glint artifacts

X : Persistence artifacts

H-band All-Sky Release Survey Atlas Image

Download: [aH_asky_980621n0960244.fits](#)

Date: 980621

Hemisphere: n

Scan: 96

Image: 244

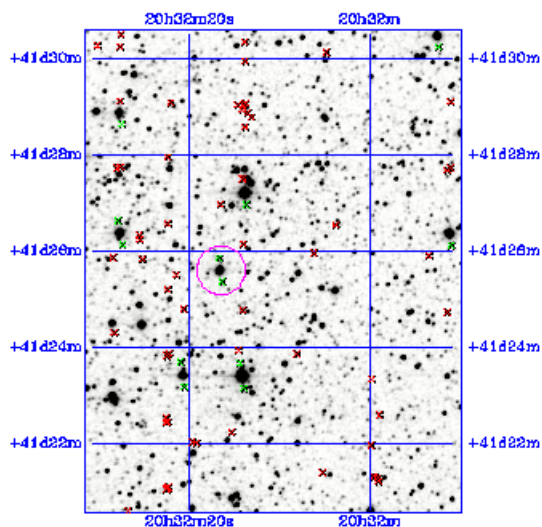


Image Parameters

Reference RA 3.080370887e+02 (deg)
 Reference Dec 4.138266383e+01 (deg)
 Reference x-pixel 2.56500e+02
 Reference y-pixel 1.43500e+02
 Height (pixels) 602
 Width (pixels) 470
 UT Date (yymmdd) 980621
 coadd_key 442771
 Seeing FWHM (") 2.85909e+00
 Zero Point (mag) 2.07186e+01
 Approximate SNR=10 (mag) 1.55590e+01

Interactive Image Preview

pixel min: 352.713

pixel max: 387.213

mapping: invert: range min: range max: show artifacts:

Artifact Location Tables

Filter glint artifacts : [glint.tbl](#)Persistence artifacts : [pers.tbl](#)