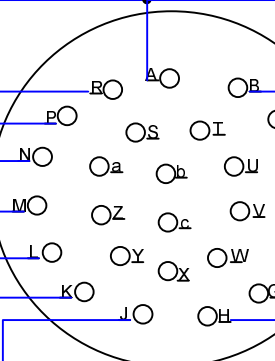
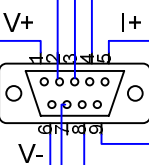
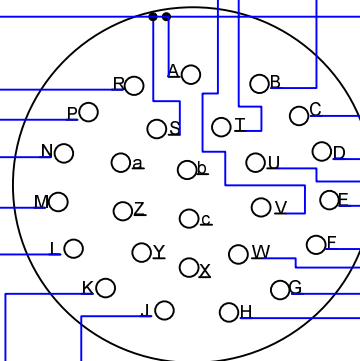


Warm Region Temp Sensor #4  
Connector - DB9F

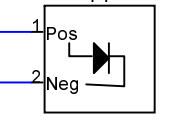


MIL16-26rever  
CW orientation  
Cryostat End



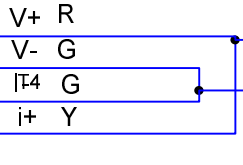
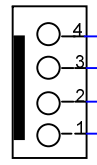
MIL16-26rever  
CW orientation  
Electronics Box End

Ambient Air  
Sensor #4  
T4

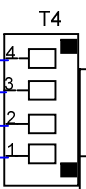


Temp\_Diode

Solder Lug View  
IDC\_4x1\_Plug



white  
Red4V+  
White4V-  
Black4i-  
Blue 4i+



DC 1x1 Spoke  
Solder Lug View

Temperature Sensor Cable MS16-26 normal keyed plugs at each end. Twisted pair cable (8 pairs) connecting plugs.  
At cryostat end, DB9 connector carries one temperature sensor line for ambient or cold head case.

D. Clemens, Mimir Project, IAR, Boston University

Rev	ID
1.3	02_003_1.3_MS16_26_cable

Date: 2005/03/09

Page: 1 of 1